



MERCY
REGIONAL
HEALTH CENTER



Community Needs Assessment for Pottawatomie County

FEBRUARY 2015

Assessment conducted by the Center
for Community Support and Research



WICHITA STATE
UNIVERSITY

CENTER FOR COMMUNITY SUPPORT
AND RESEARCH

Coordinated by:



OFFICE LOCATION | 301 N. 4th St. Manhattan, Kansas 66502

PHONE | 785.537.4040

WEBSITE | www.seniorsservicecenter.org



WICHITA STATE
UNIVERSITY

*CENTER FOR COMMUNITY SUPPORT
AND RESEARCH*

The authors of this report and leaders of the CCSR Research Team are:

Tara Gregory, Ph.D.

Carissa Coleman, Ph. D.

Sarah Jolley, M.A.

Other CCSR Researchers who supported this project are:

Adrienne Banta

Emma Crabtree

Samantha Phouangpanith

Philip Pettis, M.A.

Cassandra LeBrun-Martin, M.A.

Veronica Hinkle, Ph.D.

Table of Contents

Executive Summary 1	
Acknowledgments 5	
Pottawatomie County Profile 6	
Community Needs Assessment Purpose and Introduction 6	
Design 7	
Secondary Data 7	
Methodology 8	
Sample Selection 8	
Geographic Distribution of Survey Participants 9	
Sample Characteristics 10	
Pottawatomie County Data 13	
Quality of Life 13	
Physical Health 15	
Secondary Physical Health Data 18	
Physical Health Survey Data 19	
Physical Activity 21	
Nutrition 22	
Tobacco/Smoking 23	
Mental Health 24	
Secondary Mental Health Data 24	
Mental Health Survey Data 25	
Social Issues 26	
Secondary Social Issues Data 27	
Social Issues Survey Data 28	
Children and Youth 30	
Secondary Children and Youth Data 31	
Children and Youth Survey Data 33	
Education 37	
Secondary Education Data 37	
Education Survey Data 38	
Aging 39	
Secondary Aging Data 40	
Aging Survey Data 40	
Older Adult Needs Assessment 41	
Housing 43	
Secondary Housing Data 43	
Housing Survey Data 44	
Transportation 45	
Secondary Transportation Data 45	
Transportation Survey Data 46	
Infrastructure 47	
Secondary Infrastructure Data 47	
Infrastructure Survey Data 48	
Economics and Personal Finance 49	
Secondary Economics and Personal Finance Data 50	
Economics and Personal Finance Survey Data 50	
Appendix A: Survey A1	
Appendix B: Additional Survey Comments A21	
Appendix C: Community Resources A22	
Sources of Data A23	

Executive Summary

In an effort to gain insights from the community for the purposes of planning and community improvement, Wichita State University's Center for Community Support and Research (CCSR) was contracted to conduct a community-wide needs assessment for Pottawatomie County, which included both secondary data and survey data. Secondary data, which is publicly available such as that from the Census survey, Kansas Behavioral Risk Factor Surveillance System (BRFSS), and others, was compiled for the most recent years available as a reference point for community input. Additionally, a community survey was conducted via the internet, mail, phone, and through administration at public locations or meetings to gather input from residents regarding their perceptions of community strengths and needs in 11 different topic areas (Quality of Life, Health, Mental Health, Social Issues, Children and

Youth, Education, Aging, Housing, Transportation, Infrastructure, and Economics and Personal Finance). A total of 487 surveys were completed by Pottawatomie County residents. Although significant efforts were made to solicit participation by a representative sample of community members, the survey respondents were largely white, female, middle-aged or older, and more highly educated than the general population. While it is possible that opinions and concerns specific to underrepresented populations were not adequately reflected in the community survey, the overall picture of community perceptions of strengths and needs should provide a good starting point for further discussion and planning. The primary findings from the secondary data and community surveys are as follows:

Quality of Life

Respondents indicated **high satisfaction** with Pottawatomie County in terms of it **being a good place to raise children, being a safe and beautiful place to live, and having opportunities to volunteer.**

The lowest rated areas were recreational activities, the belief that all residents think they can make the community a better place to live, the community being strengthened by diversity, and local government; however, **even the lowest rated areas reflected a neutral feeling by residents more than dissatisfaction.**



PHYSICAL HEALTH (INCLUDING PHYSICAL ACTIVITY, NUTRITION, AND TOBACCO USE)

Data from sources such as the 2013 BRFSS indicate that residents of Pottawatomie County show fewer serious health concerns (e.g., hypertension, cancer, etc.) than average for Kansas and better than average rates of healthy behaviors. Additionally, the number reporting fair or poor health or lacking healthcare are lower than state averages. Community needs assessment survey data support this evidence that Pottawatomie County residents report being relatively healthy on average.

Both secondary data and survey data indicate that a large percentage of Pottawatomie residents get less physical activity than recommended, but nearly 60% believe that the community offers enough options for physical activity and that physical activity is valued.

Secondary data show that Pottawatomie County residents are slightly less likely to consume enough fruits and vegetables than the state average; however,



the majority of survey respondents indicate that they eat healthy in general. Responses were mixed on the survey questions regarding whether the community values healthy eating and the presence of adequate access to healthy food.

Secondary data show that the number of persons who smoke in Pottawatomie County is slightly lower than state average (17.7% for Pottawatomie; 20% for Kansas). A relatively small number of survey respondents (8.6%) reported being current cigarette or tobacco product users, but 7.4% of respondents did not answer this question.

The top ranked needs for physical health in Pottawatomie County were facilities for physical activity (including parks, trails, and recreation centers), affordable health services, and affordable health insurance.

MENTAL HEALTH

Secondary data from the 2013 BRFSS show that the percentage of Pottawatomie County residents who have experienced poor mental health is higher than the state average (12.9% for Pottawatomie, 9.7% for Kansas). The same is true for those who have experienced a depressive disorder in particular (26.6% for Pottawatomie versus 18.1% for Kansas). The community assessment survey also found that 7.6%

of respondents had been diagnosed with mental illness of some type, with depression being the most common diagnosis.

Less than a quarter (21.6%) of the survey respondents agreed or strongly agreed with the statement, “This community has adequate mental health services for people who need them.” Secondary data support this concern about a lack of accessible services.

The top needs related to mental health were focused on affordability and access to quality services, including more providers of mental health services, affordable mental health services and insurance, high quality services, and increased education and prevention regarding mental health.

SOCIAL ISSUES

Both secondary and survey data paint a fairly positive picture of Pottawatomie County regarding common social issues (e.g., crime, poverty, drop-out rates). Rates of poverty, youth substance abuse, and crime are lower than state averages, but secondary data show a possible issue with adult binge drinking. Survey responses note concerns about substance abuse for both youth and adults, manufacture and selling of drugs (e.g., methamphetamine), inattentive driving, and poverty.



CHILDREN AND YOUTH

Secondary data show that children and youth in Pottawatomie County tend to be less likely to experience issues like poverty, perinatal and neonatal risks, substance use, and dropping out than is typical for the state.

Sixteen percent (16%) of respondents who have children reported that their child has been afraid to attend school or activities due to bullying.

Survey data indicate that while respondents are positive about the child care services and schools their children attend, they have concerns about the availability and affordability of child care, activities for children and youth, and employment opportunities for teens. Respondents also rated the community low in meeting the needs of mothers and children for whom English is not their first language.

EDUCATION

Secondary data from Kansas Action for Children (Kansas Kids Count) show that Pottawatomie County fares well regarding education except when comparing the number of Early Head Start slots and schools offering all-day/everyday Kindergarten to the state average.

Survey respondents rated the quality of schools and updated technology high. The availability of afterschool activities and the amount spent per student were the lowest rated items. The primary needs as identified by respondents were recruiting and keeping good teachers, increased expectations for students and parental involvement, equality in funding among districts, and more arts activities for students.

AGING

Although Pottawatomie County has a lower percentage of adults age 65 or older than is average for Kansas (7.3% vs. 14.0%), respondents to the survey were fairly positive about the community being supportive of healthy aging and the availability of resources for older adults.

Caregivers of older adults reported that there are not enough services specific to their needs (e.g., caregiver respite); however, respondents did not provide examples of services that might be helpful.

The top priorities as identified by respondents who were 55 or over were related to maintenance of health, independence, and relationships.

The top needs as identified by all respondents (regardless of age) were focused on affordable and independent living options, mobility in the community, and affordable prescriptions.

HOUSING

Housing values in Pottawatomie County are well above average for the state (\$152,900 versus \$129,500 for Kansas). At the same time, residents in Pottawatomie County are more likely than is typical to own their home (77.9% as compared to 68.2% for Kansas).

Over 60% of survey respondents agreed that there is a lack of affordable housing in the community. Variety of affordable housing options was identified as the number one need for Pottawatomie County along with higher quality rentals, neighborhood improvement, and issues related to the maintenance of properties.



TRANSPORTATION

Pottawatomie County residents are more likely to have access to multiple vehicles for daily use than is typical for the state, but also experience more commute time alone and issues with traffic safety (i.e., lack of seat belt use, traffic-related injuries and death).

Although few survey respondents reported lack of transportation as a daily impediment, the needs they identified were largely related to increasing transportation options and routes (i.e., for bikes and pedestrians) as well as addressing inattentive driving.

INFRASTRUCTURE

While the environment (i.e., clean, good air quality) and many of the essential services (e.g., fire department, library) in Pottawatomie County are rated highly, options for navigating the county and lack of affordable housing were again rated lower than many other features; however, even the lower rated services/features were still considered to be “fair.”

ECONOMICS AND PERSONAL FINANCE

Secondary data show Pottawatomie County to be relatively prosperous with higher than average median household income, median housing value, and per capita sales; however, survey respondents indicate a lack of well-paying job opportunities.

The goods and services that are most often purchased in the community are banking, grooming/salon, and medical.

The primary needs identified by respondents are related to availability of jobs and small business development, assistance to families for basic needs, assistance in finding jobs, and assistance with personal financial management.

In general, the vision of Pottawatomie County created through this report on secondary and survey data is a positive one. Issues such as poor health, poverty, crime, or educational deficits appear to not be as prevalent in Pottawatomie County as in other communities in Kansas; however, the secondary and survey data can only provide part of the picture. These data sources give an overview of the elements that help make residents feel secure in and positive about their community.

From that perspective, the survey respondents appear to be fairly satisfied as residents of Pottawatomie County, but this community needs assessment can serve as a catalyst for further, deeper discussion about what created such positive conditions, how to continue or do more of the same, and, possibly more importantly, where the deficits are and how to address them. It is possible that those who are most in need in the community did not participate in the needs assessment due to lack of access to computers, not being present at events or facilities where the survey was administered, or simply being otherwise occupied.

Regardless, the issues highlighted as concerns deserve further discussion, including the perspectives of those who are most familiar with the topic and those who are most affected if the needs are not addressed.

Acknowledgments

The assessment was conducted by Wichita State University's Center for Community Support and Research (CCSR). The Riley County Seniors' Service Center provided leadership and coordination of this project on the local level. However, this community needs assessment was the culmination of a collaborative effort by multiple persons and organizations.

We would like to thank the individuals who participated in the community needs assessment survey. They provided us with insights into the needs of our communities and what is important to the quality of their lives.

We would like to thank the agencies that funded the Pottawatomie County Community Needs Assessment:

- Caroline Peine Charitable Foundation (Manhattan Fund)
- Konza United Way
- Mercy Regional Health Center
- Riley County Council on Aging
- Wamego Health Center

We would also like to thank the agencies that participated as members of the design team to complete a draft of the assessment:

- Konza United Way
- Mercy Regional Health Center
- Riley County Health Dept.
- Riley County Seniors' Service Center

Finally, we would like to thank the following partners that provided input regarding the draft assessment or were instrumental in encouraging the community to complete the survey or in disseminating and collecting surveys in Pottawatomie County. Because many organizations participated in disseminating or collecting surveys, our apologies to any that were inadvertently omitted.

1350KMAN	Flint Hills	Manhattan Arts	Riley County Seniors'
Angel 95FM	Breadbasket	Center	Service Center
Bethel AME Church	Flint Hills	Manhattan	Saint Luke's
Big Brothers Big	Community Clinic	Broadcasting	Episcopal Church -
Sisters of	Flint Hills Human	Manhattan Emergency	Wamego
Riley County	Rights Project	Shelter, Inc.	Salvation Army
Big Lakes	Flint Hills Volunteer	Manhattan Housing	School of Leadership
Development Center	Center (formerly	Authority	Studies - KSU
Boys & Girls Club	RSVP of the Flint	Manhattan Public	Seven Dolors
of Manhattan	Hills, Inc.)	Library	Catholic Church
Catholic Charities of	Friendship Meals	Manhattan/Riley	Shepherd's Crossing
Northern Kansas	Program	County Preservation	South Manhattan
Center on Aging - KSU	Garden Grove	Alliance	Neighborhood
Child Development	Apartments	Manhattan-Ogden	Association
Center - KSU	Greater Manhatttan	USD 383 Head Start/	Stoneybrook
City of Leonardville	Community	Early Head Start	Retirement
City of Manhattan	Foundation	Meadowlark	Community
City of Manhattan	HandsOn	Hills Retirement	Sunflower CASA
Parks & Recreation	Kansas State	Community	Project, Inc.
City of Manhattan	Homecare & Hospice	Mercy Regional	Sunny 102.5
Social Services	Homestead Assisted	Health Center	The Crisis Center
Advisory Board	Living	National Church	The Kansas State
City of Ogden	Housing & Credit	Residences	Collegian
City of Randolph	Counseling Inc. -	North Central Flint	The Manhattan
City of Riley	Manhattan	Hills Area Agency	Free Press
Colorado Plaza	Kansas Legal	on Aging	The Manhattan
Apartments	Services	Ogden Friendship	Mercury
Community	Konza Prairie	House	Three Rivers, Inc.
Health Ministries -	Community	Pawnee Mental	UFM Community
Manhattan	Health Clinic	Health Services	Learning Center
Community Health	Konza United Way	Pilgrim Baptist	USD 320 Wamego
Ministries - Wamego	KSNT News	Church	USD 323 Rock Creek
Department	League of Women	Pottawatomie	USD 378 Riley
of Sociology,	Voters of Manhattan/	County Health	USD 383 Manhattan/
Anthropology &	Riley County	Department	Ogden
Social Work - KSU	LGBT Resource	Riley County	USD 383 Open Door
Douglass Community	Center - KSU	Riley County	USD 384 Blue Valley
Center	Lion's Club	Community	Via Christi
Downtown	Manhattan Area	Corrections	Retirement Village
Manhattan, Inc.	Chamber of	Riley County Council	Wamego Chamber
Family Connections	Commerce	on Aging	of Commerce
of Riley County	Manhattan Area	Riley County	Wamego Health
First Presbyterian	Habitat for Humanity	Extension	Center
Church	Manhattan Area	Riley County Health	Wamego Smoke
First United	Housing Partnership	Department	Signal
Methodist Church	Manhattan Area	Riley County Police	WIBW News
Flint Hills Area	Technical College	Department	Wonder Workshop
Transportation			
Agency			



Pottawatomie County Community Profile

According to the 2010 Census, Pottawatomie County encompasses 841.02 square miles in Northeast Kansas with approximately 26 persons per square mile (compared to an average of 35 persons per square mile across Kansas). The total population of Pottawatomie County in 2013 was estimated at 22,691. Wamego is the largest town in the county with a population of 4,372 (2010 Census). Pottawatomie County is less diverse than the norm for the state with approximately 94% White, 4% Hispanic or Latino, 3% two or more races, and less than 1% each for African American, Asian, Native American or Pacific Islander. The median age in Pottawatomie County is 33.3, with 30.4% of the population under 21. Agriculture is a primary industry/business, particularly in the northern part of the county, with private manufacturing employers such as Caterpillar Work Tools, Inc., Dymax, Kaw Valley Wilbert Vault, and R-W Alfalfa Milling being the largest. Pottawatomie County typically experiences lower rates of poverty, unemployment, infant mortality, drop out, crime, and a number of other indicators that negatively impact quality of life as compared to state averages and is rated as the third healthiest county in Kansas according to the 2014 Robert Wood Johnson Foundation's County Health Rankings and Roadmaps.

Community Needs Assessment Purpose and Introduction

Needs assessments are a valuable tool in determining community perceptions, strengths, and concerns for the purpose of planning and community improvement. Community assessments are also helpful or required for accreditation for local health departments and hospitals. For these reasons, the Riley County Seniors' Service Center in cooperation with Konza United Way, Mercy Regional Health Center, Riley County Health Department, and other community partners commissioned the community needs assessment that is detailed in this report. The purpose was to gather information from multiple sources, including publicly available data and community members themselves, in order to highlight community strengths and concerns

for use by local individuals and organizations to guide efforts to address issues and plan for the future.

NOTE: Riley County Senior's Services contracted with the Center for Community Support and Research to conduct the needs assessment concurrently for both Pottawatomie and Riley Counties in order to meet the needs of various partners that serve both areas. However, other than certain details related to methodology, the information contained in this report pertains only to Pottawatomie County.

Community needs assessments involve the key elements of convening stakeholders for planning (e.g., determining area of focus for the assessment, reviewing instruments, identifying the target population and avenues for dissemination), administration of a community survey, and/or use of qualitative methods (i.e., interviews, focus groups) to gather public perceptions, analysis of data,

and reporting to key partners and the community. Community needs assessments typically use the approach of gathering data from a convenience sample, which is defined as those most easily accessible to and interested in the topic or community. This method differs from basic laboratory research methods in which samples are recruited or randomly selected. For the purpose of gathering responses from a broad cross-section of the community, the partners and supporters of the Pottawatomie County community needs assessment solicited participation from people of all ages, ethnicities, income brackets, professions, and other qualifiers that might impact one's experience and perception of the community. Every effort was made to gather input from a representative sample consistent with Census data for Pottawatomie County. As is noted in the demographics section below, approximately 25% of respondents did not answer questions related to age, race, income, etc. For those who did answer, populations such as younger adults and racial minorities are not proportionately represented as compared to the 2010 Census for Pottawatomie County; however, this is a common limitation of a convenience sample because the response rate across demographics is dependent upon the willingness of community members to respond and to provide accurate information about themselves.

The following report includes detailed information about the methodology of the community survey, demographics of respondents, secondary data, and survey data for Pottawatomie County. Secondary and survey data regarding Quality of Life are presented first followed by sections on Physical Health, Mental Health, Social Issues, Children and Youth, Education, Aging, Housing, Transportation, Infrastructure, and Economics and Personal Finance. As noted, each topic section except Quality of Life begins with the related secondary (or publicly available) data from sources such as the 2010 Census, Kansas Behavioral Risk Factor Surveillance System (BRFSS), Kansas Department for Children and Families, Kansas Kids County, Kansas Communities That Care, etc. Survey data are from the Community Needs Assessment survey that was completed (at least partially) by 487 Pottawatomie County residents. The survey was administered via the internet, mail, phone, and through community meetings and organizations.

Design

In conducting this community needs assessment survey, the sponsors sought to improve the local quality of life and community for Pottawatomie County. To achieve this goal, a comprehensive literature review of needs assessment surveys was performed by Wichita State University's Center for Community Support and Research (CCSR) to determine how other communities had recently assessed their needs, designed their research approach, and chosen potential survey items.

CCSR worked with the design team, which included representatives from Riley County Seniors' Service Center, Konza United Way, Mercy Regional Health Center, and Riley County Health Department, to complete a draft assessment. Community partners were then invited to a community meeting to provide feedback. Once the design team approved the final survey, Institutional Review Board (IRB) approval was obtained through Wichita State University.

The needs assessment consists of 12 sections: Quality of Life, Physical Health, Mental Health, Social Issues, Children and Youth, Education, Aging, Housing, Transportation, Infrastructure, Economics and Personal Finance, and Demographic Information. The survey can be seen in Appendix A. It took approximately 30 minutes to complete.

SECONDARY DATA

Secondary data are typically collected by large institutions or organizations and made available publicly. The most well-known example of a secondary data source is the U.S. Census. For the purposes of this community assessment, CCSR compiled relevant pieces of secondary data to complement and compare to the survey data. The most recent secondary data available were used whenever possible; however, secondary data can often be several years old due to the arduousness of collection across large populations. Additionally, some secondary data are not available on a county level due to limitations in data collection or ethical issues in reporting on issues that affect a small number of persons in a given community. Given that

multiple entities publish data on the same issues, it is also possible to find differences in what appears to be similar data. This is often due to slight differences in the reporting period, characteristics of the sample, method of data collection, or other variables. This report includes secondary data that are 1) easily understandable, 2) most relevant to the general community, and 3) from credible, well-respected sources. Whenever possible, CCSR included data from the original source rather than relying on that from compilations (e.g., Robert Wood Johnson County Health Rankings, Kansas Health Matters, etc.). All data reported include the source and year from which the numbers were taken.

NOTE: Several organizations have created community assessments for the Northeast Region or Pottawatomie County on targeted topics (i.e., NEK-CAP Inc. Community Action Partnership Comprehensive Community Assessment regarding poverty, Flint Hills Regional Council's 2014 Flint Hills Workforce Study). The reports from these organizations were reviewed by CCSR and relevant data that were not available elsewhere or from a more recent year were incorporated into this report; however, the secondary data included in this report are not meant to be exhaustive but to provide a comparison for similar survey findings from the current community needs assessment.

Survey Methodology

SAMPLE SELECTION

To ensure a meaningful sample, a mixed-method survey approach was utilized. A convenience sample was used for the online and paper surveys, and a random sample was used for the phone and mail surveys. The same survey was used across all methods of administration. A total of 487 surveys

were collected for Pottawatomie across all methods of administration.

Online Survey

The online survey was created and administered in Qualtrics and posted on linked websites, *Riley-PottSurvey.com* and *Riley-PottawatomieSurvey.com*, which were created to disseminate the survey. The Project Coordinator at Riley County Seniors' Service Center worked closely with the survey sponsors to create a roster of community partners in Pottawatomie County who would assist with disseminating the survey website. The community partners were asked to promote and distribute the website via their own websites, social media accounts, internal staff email, and other regular media outlets. The community partners were also updated throughout the survey collection to ensure effective and efficient administering of the survey. The list of community partners can be seen under the Acknowledgments.

The survey began April 21, 2014, and was closed May 26, 2014. To ensure the sample represented the population in Pottawatomie County, the distribution by age, gender, race, and ethnicity was compared to the 2010 US Census data weekly and reported back to the Project Coordinator at Riley County Seniors' Service Center to adjust collection methods. The online survey was offered in English, Spanish, and Korean.

Paper Survey

The paper survey was made available at various locations throughout the community through the efforts of the community partners. Self-addressed envelopes were provided along with the survey. Respondents could either mail their completed surveys directly back to CCSR or, if completing a survey at a particular site or event, surveys were collected by a designated person at the site/location and sent in bulk back to CCSR. Special efforts were made to administer surveys at community events or organizations that cater to populations that tend to be underrepresented in community discussions and planning (i.e., Hispanic/Latino, Korean, older adults, youth, persons with disabilities, etc.). The paper survey was offered in English, Spanish, and Korean.

Phone and Mailed Survey

To expedite the collection of data, CCSR contracted with the Docking Institute University Center for Survey Research at Fort Hays State University to conduct the phone and mail surveys. The Docking Institute used an address-based random sample with the goal of completing at least 100 phone calls and 50 to 75 mailed surveys. They called residences for which a phone number (land line) was available and mailed the survey to the remaining addresses. Although cell phone numbers were not used for the phone survey, it is likely that persons who use a cell phone instead of a land line were included in the mailing of surveys. For the phone surveys, the Docking Institute attempted to make calls for approximately two weeks, trying each selected phone number up to three times. The phone survey was administered in English or Spanish and only administered to persons over the age of 18. The total number of random phone surveys collected was 70 for Pottawatomie County. The total number of dialings was 3,041 with a 26.6% incidence rate, and the total number of refusals was 378 across both Pottawatomie and Riley counties. For the mailed survey, the Docking Institute did one mailing for both counties to 600 addresses for both counties with no reminders or follow-up mailings. The total number of returned mailed surveys was 6 for Pottawatomie County.

The total number of surveys by survey type and by language for Pottawatomie County can be seen in Tables 1 and 2.

Table 1. Survey Type for Pottawatomie. (n=487)

Survey Type	Frequency	%
Online	393	80.7
Mail	6	1.2
Phone	70	14.4
Paper	18	3.7

Table 2. Survey Language for Pottawatomie County. (n=487)

Language	Frequency	%
English	487	100.0

GEOGRAPHIC DISTRIBUTION OF SURVEY PARTICIPANTS

Table 3. Do you consider this county to be your permanent residence?

Answer	Frequency	%
Yes	477	97.1
No	7	1.4
Not Answered	3	0.6

Table 4. What city is listed on your address?

City	Frequency	%
Wamego	188	38.6
Manhattan	65	13.3
St George	23	4.7
Leonardville	22	4.5
Jackson	20	4.1
Madison	16	3.3
Westmoreland	14	2.9
Fancy Creek	8	1.6
St Mary's	7	1.4
Onaga	3	0.6
Belvue	2	0.4
Center (RL)	2	0.4
Bala	1	0.2
Blaine	1	0.2
Louisville	1	0.2
May Day	1	0.2
Olsburg	1	0.2
Wheaton	1	0.2
Not answered	111	22.8

Table 5. What is your zip code?

Answer	Frequency	%
66547	274	56.3
66502	85	17.5
66535	40	8.2
66549	27	5.5
66521	18	3.7
66536	9	1.8
66520	8	1.6
66407	5	1.0
66449	1	0.2
66503	1	0.2
66554	1	0.2
Not answered	17	3.5

SAMPLE CHARACTERISTICS

Respondents were asked a series of questions about age, gender, race, ethnicity, income, and education to help assess the comparability of the survey respondents with the general population in Pottawatomie County, as reflected in the 2010 U.S. Census. Additionally, marital status, military service, employment status, student status, religious involvement, access to the Internet, and access to community information were also asked to help with the interpretation of the survey results. The demographics (with the exception of age) were at the end of the survey, and roughly 25% of respondents did not answer the questions. This may have been due to survey length instead of unwillingness to provide demographic information.

Age

One percent (1.2%) of the survey respondents ranged from 18 to 24 years of age. Seventeen percent (16.6%) of respondents ranged from 25 to 34 years of age. Thirty-eight percent (38%) of respondents ranged from 35 to 49 years of age. Twenty-five percent (25.1%) of respondents ranged from 50 to 64 years of age. Fourteen percent (13.8%) of respondents ranged from 65 to 74 years of age. Five percent (5.1%) of respondents were age 75 or older. See Table 6. The age of the survey respondents was compared to the 2010 Census data. See Table 7. Younger people (18-24) were underrepresented while middle-aged people (35-49) were overrepresented when compared to the general population.

Table 6. Age

Answer	Survey Sample	%	Census Data	%
18 to 24 years	6	1.2	1098	7.5
25 to 34 years	81	16.7	2809	19.2
35 to 49 years	185	38.1	4191	28.6
50 to 64 years	122	25.1	3902	26.6
65 years +	92	18.9	2660	18.1
Not answered	7			

Gender

Fifty-five percent (55%) of the survey respondents were female, and twenty percent (20.7%) of respondents were male. The gender of the survey respondents was compared to the 2010 Census data. Men were underrepresented when compared to the general population; however, nearly 25% of respondents did not provide an answer to this question. See Table 7.

Table 7. Gender

Answer	Survey Sample	%	Census Data	%
Female	268	55.0	10888	50.4
Male	101	20.7	10716	49.6
Not answered	118	24.2		
Other	0	0.0		

Race

Seventy-four percent (73.9%) of the survey respondents identified as White. Less than one percent identified as African American/Black (0.2%), Asian (0.2%), American Indian or Alaska Native (0.4%), Multiracial (0.8%), or Other (0.2%). See Table 8. The race of the survey respondents was compared to the 2010 Census data. Based on those who responded to the question regarding race, racial minorities as a whole were underrepresented when compared to the general population; however, the representation of those who reported being White/Caucasian was also low. Given that nearly 25% of the respondents did not answer this question, it cannot be accurately ascertained whether respondents were representative in terms of race.

Table 8. Racial Categories

Answer	Frequency	%	Census Data	%
White	360	73.9	20212	93.6
Multiracial	4	0.8	554	2.6
American Indian or Alaska Native	2	0.4	168	0.8
African American/Black	1	0.2	227	1.1
Other	1	0.2	287	1.3
Asian	1	0.2	144	0.7
Native Hawaiian or Pacific Islander	0	0.0	12	0.1
Not answered	118	24.2		

Ethnicity

Seventy-two percent (71.7%) of the survey respondents identified as Not Hispanic or Latino. Less than one percent (0.6%) of respondents identified as Hispanic or Latino. The ethnicity of the survey respondents was compared to the 2010 Census data. See Table 9. Hispanics and Latinos were underrepresented when compared to the general population; however, over 27% of respondents did not answer this question.

Table 9. Ethnic Category

Answer	Survey Sample	%	Census Data	%
Not Hispanic or Latino	349	71.7	20647	95.6%
Hispanic or Latino	3	0.6	957	4.4%
Not answered	135	27.7		

Income

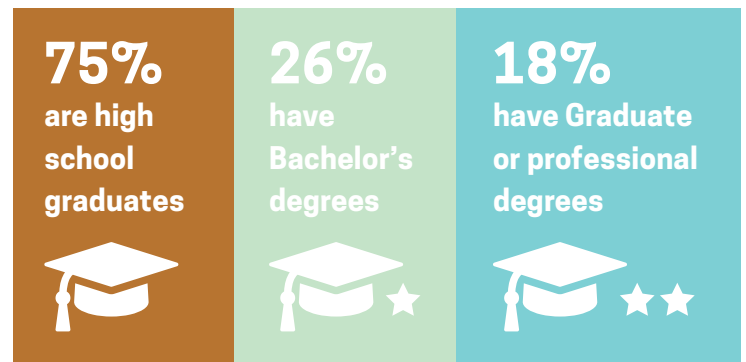
The household income of survey respondents is shown in Table 10. The median household income

for Pottawatomie County is \$55,758. The largest percentage (18.3%) of respondents reported having incomes in the same category as is the median for Pottawatomie County (i.e., \$50,000 to \$74,999) with 11.1% reporting incomes lower than \$50,000 and 31.4% with \$75,000 or higher.

Table 10. What was your total household income last year, before taxes?

Answer	Frequency	%
Less than \$10,000	3	0.6
\$10,000 to \$14,999	7	1.4
15,000 to \$24,999	19	3.9
\$25,000 to \$34,999	25	5.1
\$35,000 to \$49,999	54	11.1
\$50,000 to \$74,999	89	18.3
\$75,000 to \$99,999	75	15.4
\$100,000 to \$199,999	65	13.3
\$200,000 or more	13	2.7
Not answered	137	28.1

Note: The median household income for Pottawatomie County is \$55,758



Education

Twenty-five percent (25%) reported having some college or technical training, and twenty-six percent (25.7%) reported being college graduates. Eighteen percent (17.7%) reported having a graduate or professional degree. Only one percent (1%) had less than a High School diploma. See Table 11. The education level of the survey respondents was compared to the 2010 Census data at the state and national level. The high school and college graduates were comparable; however, the graduate or professional degrees were much higher than the general population. See Table 12.

Table 11. What is the highest level of school, college or vocational training that you have finished?

Answer	Frequency	%
Less than 9th grade	0	0.0
9-12th grade, no diploma	5	1.0
High school graduate (or GED/equivalent)	32	6.6
Associate's degree or vocational training	57	11.7
Some college (no degree)	65	13.3
Bachelor's degree	125	25.7
Graduate or professional degree	86	17.7
Not answered	117	24.0

Table 12. Education level comparison across survey sample, state, and nation.

Degree	% Survey Sample	% Kansas Census Data	% US Census Data
High school graduate	75	86	80.4
Bachelor's degree	25.7	25.8	24.4
Graduate or professional degree	17.7	8.7	8.9

Note: Percent based on total N (487). Each person may have selected more than one option. Totals will not equal 100%

Other Demographics

Table 13. What best describes your current marital status? (n=369)

Answer	Frequency	%
Married	292	60.0
Divorced	33	6.8
Widowed	25	5.1
Single, never married	14	2.9
Not married, but living together	5	1.0
Domestic partnership or civil union	0	0.0
Not answered	118	24.2

Table 14. Have you been a member of the Armed Services/Military?

Answer	Frequency	%
Yes	36	7.4
No	329	67.6
Not answered	122	25.1

Table 15. If "yes" to being a member of the Armed Services/Military: What is your current status?

Answer	Frequency	%
Retired	20	4.1
Inactive	12	2.5
Active	3	0.6
Disabled or Injured	1	0.2

Note: Percent based on total N (487).

Table 16. What is your employment status?

Answer	Frequency	%
Employed full-time (one job)	190	39.0
Retired	61	12.5
Working more than one job	30	6.2
Self-employed	27	5.5
Employed part-time	26	5.3
Homemaker	20	4.1
Disabled	7	1.4
Unemployed for more than 1 year	5	1.0
Unemployed for 1 year or less	0	0.0
Not answered	121	24.8

Table 17. What county do you currently work in?

Answer	Frequency	%
Riley	124	25.5
Pottawatomie	160	32.9
Other	31	6.4
Not answered	172	35.3

Table 18. Are you a student taking courses for credit?

Answer	Frequency	%
Yes	27	5.5
No	333	68.4
Not answered	127	26.1

Table 19. I am a student.

Answer	Frequency	%
Part-time	17	1.5
Full-time	10	0.9

Note: Percentage based on total N (487).

Table 20. Which of the following best describes the school you are attending?

Answer	Frequency	%
Four-year college or university	14	2.9
Two-year community college	7	1.4
Vocational, technical, or trade school	3	0.6
Other	3	0.6

Note: Percentage based on total N (487).

Table 21. Do you participate in a religious/faith community?

Answer	Frequency	%
Yes	255	52.4
No	105	21.6
Not answered	127	26.1

Table 22. Which of the best describes how you access the Internet?

Answer	Frequency	%
Home Computer	312	64.1
Mobile (cell phone, tablet, etc.)	233	47.8
Work Computer	205	42.1
Public Computer	14	2.9
I don't access the Internet	13	2.7

Note: Percent based on total N (487). Each person may have selected more than one option. Totals will not equal 100%.

Table 23. How do you normally get your news about community events?

Answer	Frequency	%
Newspaper	264	54.2
Friends/Family	218	44.8
TV/local cable	196	40.2
Internet	182	37.4
Social media (Facebook, Twitter, etc.)	174	35.7
Radio	156	32.0
Email/RSS	137	28.1
Community flyers	99	20.3
Newsletters	84	17.2

Note: Percent based on total N (487). Each person may have selected more than one option. Totals will not equal 100%.

Pottawatomie County Secondary Data and Survey Results

Quality of Life

SUMMARY OF FINDINGS

Respondents to survey questions regarding Quality of Life were largely satisfied across all areas except for recreational activities, the belief that all residents think they can make the community a better place to live, the community being strengthened by diversity, and local government. Respondents indicated the highest levels of satisfaction with Pottawatomie being a good place to raise children (mean=4.40), a safe place to live (4.26), a beautiful place to live (4.26), and the availability of volunteer opportunities (4.11). Mean ratings for the lowest ranked areas were all above 3 (out of 5), which means that the largest percentage of answers were “neither agree nor disagree” and “agree” in response to the various statements regarding Quality of Life.

Responses to the question regarding the most important contributors to a high quality of life are consistent with those items which were rated most highly on satisfaction for Pottawatomie County. Namely, the primary contributors are thought to be good schools, being a good place to raise children, and safe neighborhoods.

See Tables 24 and 25 for specific data regarding Quality of Life.

QUALITY OF LIFE SURVEY DATA

Table 24. Please rate the following statements about the quality of life in your community based on your experiences.

Statement	N	Strongly Disagree	Disagree	Neither Agree nor Disagree	Agree	Strongly Agree	Mean
This is a good place to raise children.	484	0.0%	1.0%	6.0%	46.0%	47.0%	4.40
This is a safe place to live.	486	1.0%	1.0%	5.0%	58.0%	35.0%	4.26
This is a beautiful place to live.	485	0.0%	2.0%	8.0%	51.0%	39.0%	4.26
There are opportunities to volunteer in my community.	480	0.0%	4.0%	11.0%	56.0%	29.0%	4.11
I am satisfied with the quality of life in this community.	485	1.0%	4.0%	8.0%	62.0%	25.0%	4.05
I am satisfied with the local schools.	480	1.0%	6.0%	13.0%	50.0%	30.0%	4.00
This is a good place to retire.	483	2.0%	7.0%	16.0%	45.0%	31.0%	3.96
All individuals and groups have the opportunity to contribute to and participate in the community's quality of life.	477	2.0%	9.0%	17.0%	52.0%	21.0%	3.81
There is an active sense of civic responsibility, engagement, and pride in shared accomplishments.	481	1.0%	10.0%	20.0%	49.0%	20.0%	3.78
I am satisfied with the healthcare system in this community.	483	2.0%	12.0%	16.0%	53.0%	17.0%	3.69
There are networks of support for individuals and families during times of stress and need.	477	2.0%	12.0%	23.0%	47.0%	16.0%	3.63
There is economic opportunity in this community.	481	4.0%	17.0%	20.0%	45.0%	15.0%	3.50
I am satisfied with local government.	482	2.0%	14.0%	32.0%	45.0%	7.0%	3.39
The community is strengthened by its diversity.	477	5.0%	15.0%	28.0%	42.0%	9.0%	3.35
All residents think that they can make the community a better place to live.	475	3.0%	17.0%	33.0%	40.0%	8.0%	3.33
There are plenty of recreational activities for my family and me.	480	6.0%	23.0%	19.0%	39.0%	13.0%	3.28

Table 25. What are the three most important factors that contribute to a high quality of life in this community?

Answer	Frequency	%	Answer	Frequency	%
Good schools	259	53.2	Availability of healthcare	101	20.7
Good place to raise children	256	52.6	Arts and cultural events	95	19.5
Safe neighborhoods	181	37.2	Access to affordable health insurance	93	19.1
Low crime	157	32.2	Career enhancement	75	15.4
Strong family life	152	31.2	Low disease rates	75	15.4
Religious or spiritual values	143	29.4	Equality	74	15.2
Clean environment	142	29.2	Other	72	14.8
Healthy economy	138	28.3	Low level of child abuse	71	14.6
Affordable housing	136	27.9	Resources for parents	70	14.4
Jobs with adequate wages	136	27.9	Note: Percentage based on total N (487). Each person may have selected more than one option. Totals will not equal 100%.		
Parks and recreation	110	22.6			
Healthy behaviors and lifestyles	106	21.8			

Physical Health (Including Physical Activity, Nutrition, Tobacco Use)

SUMMARY OF FINDINGS

Physical Health

According to the Robert Wood Johnson Foundation’s 2014 County Health Rankings, Pottawatomie County is ranked as the third healthiest county in Kansas (out of 98) based on 29 indicators including smoking, education, employment, physical inactivity, and access to healthy foods. Secondary data for Pottawatomie County support this ranking, with Pottawatomie residents having fewer serious health concerns (e.g., hypertension, cancer, etc.) than average for Kansas and better than average rates of healthy behaviors, except for physical activity and consumption of fruits and vegetables. Additionally, fewer adults than average for Kansas rate their health as fair or poor or lack healthcare coverage in Pottawatomie County.

Pottawatomie County is ranked as the third healthiest county in Kansas (out of 98) based on 29 indicators including smoking, education, employment, physical inactivity, and access to healthy foods.

Nearly 87% percent of the respondents to the community needs assessment survey indicated that their health was good, very good, or excellent. This is notable given that the

respondents on the survey were typically 35 years or older. Other findings from the survey regarding physical health in Pottawatomie County include:

- The majority of respondents rely on a doctor/nurse and/or the Internet for health information.
- Nearly a quarter (24%) of the respondents have been diagnosed with high blood pressure (hypertension) with 18.9% reporting that they have high cholesterol.

It is possible that some respondents reported having both. This is fairly consistent with rates reported through secondary data.

- Nearly 8% of respondents reported having any type of mental health diagnosis. For those who chose to specify their diagnosis, depression was the most frequent.
- The large majority of respondents have health insurance (92.8%), and 77.5% agreed or strongly agreed with the statement: “I can access the healthcare I need in this community.”

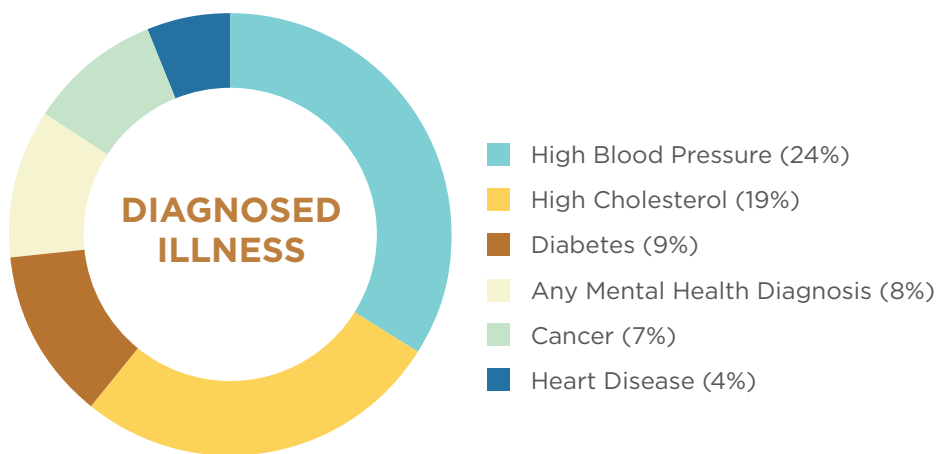
- The majority (88.9%) consult a professional when they are sick and most often go to their doctors (76.6%) over other options.
- The majority of survey respondents (58.5%) reported receiving the flu shot or nasal spray, which is a higher percentage than reported in the most recent BRFSS (39.9% in 2013).
- The top ranked needs for Pottawatomie County related to physical health were focused on affordability and availability of health-related services. Specifically, the top choices were facilities for physical activity (including parks, trails, and recreation centers), affordable health services, and affordable health insurance; however, none of the top ranked needs were selected by more than 20% of respondents.
- The primary reasons they do not exercise are lack of time and not liking exercise.
- Respondents most often exercise at home, in their neighborhood, or at the park or gym.
- Just over half of respondents (54.9%) indicated that they agreed or strongly agreed with the statement: “There are enough options for physical activity in this community.” The same is true for the statement: “This community values physical activity,” with 58.2% agreeing or strongly agreeing. Although these pieces of data reflect that the majority of Pottawatomie residents have a positive perception of availability and attitudes toward physical activity, a relatively large number have neutral or negative perceptions.

Physical Activity

According to the Physical Activity Guidelines for Adults (U.S. Department of Health and Human Services), adults should get at least 2 hours and 30 minutes of moderate intensity aerobic physical activity per week and strengthening exercises on at least two days each week. Secondary data for Pottawatomie County indicate that the majority of residents (85.4%) do not get the recommended amount of aerobic and strengthening activities. This is higher than state average (82.1%) and also greater than the 62.2% of survey respondents who report getting three hours or less of any type of exercise or physical activity (outside of their regular job) each week. When asked about further specifics related to physical activity, survey respondents indicated the following:

Nutrition

Current dietary guidelines recommend that depending upon gender, age, and level of physical activity, most adults should consume one to two cups of fruit and two to three cups of vegetables each day (U.S. Department of Agriculture). The guidelines also recommend that fruits and vegetables should be half of the typical person’s plate with proteins (lean meat, poultry, seafood, beans, etc.) and grains (primarily whole grains) being roughly one-fourth each. Of the respondents on the community needs assessment survey, 74.1% indicate that they eat healthy foods overall; however, secondary data indicate that 37.0% of Pottawatomie residents consume fruit less than one time per day, and 21.5% consume vegetables less than once per day. These averages are slightly better than for the state in general (41.4% consume fruits less



46.5%
of the community needs assessment survey respondents reported eating fruits and/or vegetables two times or less per day



than once per day; 22.3% consume vegetables less than once per day). Similarly, 46.5% of the community needs assessment survey respondents reported eating fruits and/or vegetables two times or less per day. Other data from the community needs assessment survey includes the following:

- When asked why they do not eat enough fruits and/or vegetables, the reasons typically focused on cost and convenience, including not having enough time to purchase or prepare them, and it not being a priority.
- Responses were varied when asked how strongly respondents agreed or disagreed with the statement: “This community values healthy eating.” The largest number chose the answer “neither agree nor disagree” (38.0%), with 38.8% agreeing or strongly agreeing.
- Although the majority (61.4%) agreed or strongly agreed with the statement: “I can access the healthy food I need in this community,” 31.2% indicated they were either neutral or disagreed with the statement to some extent.
- Over 8% of the respondents indicated that they are often concerned about having enough food for them and their families to eat.

Tobacco Use

According to the 2013 BRFSS, 17.7% of Pottawatomie County residents surveyed smoked cigarettes as compared to 20.0% for Kansas as a whole. On the community needs assessment survey, 8.6% reported being a current smoker or tobacco product user; however, 7.4% of the respondents did not answer this question. Those who indicated that they smoke or use tobacco products were asked an additional question about where they would go for help if they wanted to quit. The most frequently reported answer was doctor (50%) followed by “I don’t know” (16.7%) and the Kansas Quitline (14.3%). Just one person (2.4%) responded that the question was not applicable because he/she did not want to quit.

See Tables 26 through 54 for more specific secondary and survey data for physical health, physical activity, nutrition, and tobacco use.

SECONDARY PHYSICAL HEALTH DATA (INCLUDING PHYSICAL ACTIVITY, NUTRITION, TOBACCO USE)

Table 26. Selected secondary physical health data.

Personal Health	Pottawatomie County	Kansas	Source
Percent of adults with fair or poor self-perceived health status, 2013	11.8%	15.4%	BRFSS
Percent of population without health insurance, 2012	8.0%	13.1%	US Census Bureau American Community Survey
Ratio of population to primary care physicians (per physician), 2011	1963.1 population per physician	1815.5 population per physician	KDHE
Percent of adults with hypertension, 2013	30.5%	31.3%	BRFSS
Rate of heart disease hospital admissions (per 100,000), 2009-2011	342.9	300.4	KDHE
Percent of adults tested and diagnosed with high cholesterol, 2013	31.4%	38.1%	BRFSS
Rate of age-adjusted cancer (all cancers, per 100,000), 2007-2011	410.57	501.84	KS Cancer Registry
Percent of adults diagnosed with diabetes, 2013	8.3%	9.6%	BRFSS
Percent of adults who were immunized against influenza in the past 12 months, 2013	39.9%	42.2%	BRFSS
Percent of adults who are obese, 2013	29.0%	30.0%	BRFSS
Percent of adults living with a disability, 2013	24.0%	21.1%	BRFSS
Percent of adults not participating in the recommended level of physical activity (aerobic and/or strengthening), 2013	85.4%	82.2%	BRFSS
Percent of adults who reported consuming fruit less than one time per day, 2013	49.9%	41.7%	BRFSS
Percent of adults who reported consuming vegetables less than one time per day, 2013	29.4%	22.9%	BRFSS
Percent of food insecure households	14.2% (2007-2009)*	15.2% (2013)*	United States Department of Agriculture
Percent of population with low access to food store, 2010	19.23%*	n/a*	United States Department of Agriculture
Percent of adults who currently smoke cigarettes, 2013	17.7%	20.0%	BRFSS

Note: Data regarding food insecurity for Pottawatomie was only available for 2007-2009; state data was not available for the same time frame and comes from 2013. For data regarding low access to food stores, data was only available by county.

PHYSICAL HEALTH SURVEY DATA (INCLUDING PHYSICAL ACTIVITY, NUTRITION, TOBACCO USE)

Physical Health

Table 27. How do you get most of your health-related information?

Answer	Frequency	%
Doctor/Nurse	363	74.5
Internet	221	45.4
Friends and family	168	34.5
Other	98	20.1
Pharmacist	92	18.9
Hospital	84	17.2
Books/magazines	67	13.8
Health department	29	6.0
My child's school	28	5.7
Church	19	3.9
Help lines	5	1.0

Note: Percent based on total N (487). Each person may have selected more than one option. Totals will not equal 100%.

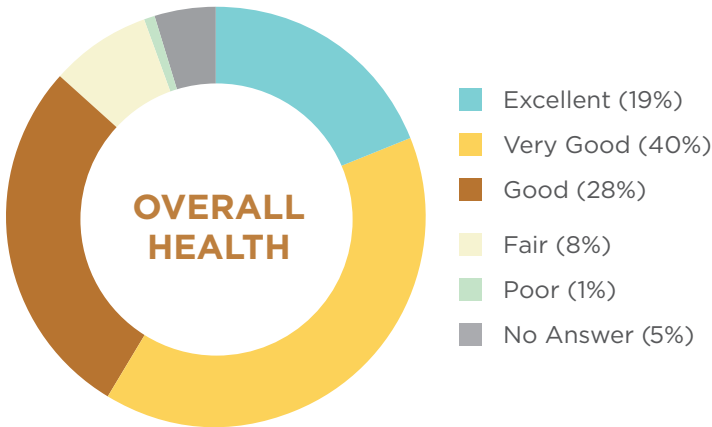


Table 28. How would you describe your overall health?

Answer	Frequency	%	Mean (Range 1-5)
Poor	3	0.6	3.73
Fair	38	7.8	
Good	137	28.1	
Very Good	194	39.8	
Excellent	92	18.9	
Not Sure	1	0.2	
Not answered	22	4.5	

Table 29. Has a health professional ever diagnosed you with one of the following?

Answer	Frequency	%
High Blood Pressure	117	24.0
High Cholesterol	92	18.9
Diabetes	43	8.8
Any Type of Mental Health Diagnosis	37	7.6
Cancer	33	6.8
Heart Disease	21	4.3
Chronic Lung Disease	8	1.6
Alzheimer's/Dementia	3	0.6

Note: Percent based on total N (487). Each person may have selected more than one option. Totals will not equal 100%.

Table 30. What was your mental health diagnosis?

Diagnosis	Frequency
Depression	6
Anxiety and Depression	3
Anxiety	3
Bipolar	2
ADHD	2
Post Partum Depression	1
PTSD and Depression	1

Note: This question was asked only of those reporting a mental health diagnosis.

Table 31. Do you have health insurance?

Answer	Frequency	%
Yes	452	92.8
No	14	2.9
Not answered	21	4.3

Table 32. Do you consult a professional when you are sick?

Answer	Frequency	%
Yes	433	88.9
No	30	6.2
Not answered	24	4.9

Table 33. Where do you go most often when you are sick?

Answer	Frequency	%
My doctor's office	373	76.6
Medical clinic	28	5.7
Health department	2	0.4
Urgent care center	13	2.7
Hospital emergency room	4	0.8
Free clinic	2	0.4
Other	12	2.5

Note: Percent based on total N (487). Each person may have selected more than one option. Totals will not equal 100%.

Table 34. In the last 12 months, have you received a flu shot or nasal spray?

Answer	Frequency	%
Yes	285	58.5
No	180	37.0
Not answered	22	4.5

Table 36. What are the top three needs related to physical health in your community?

Answer	Frequency	%
Facilities for physical activity (including parks, trails, rec centers)	164	33.7
Affordable health services	142	29.2
Affordable health insurance	118	24.2
Access to healthy food options	103	21.2
Affordable prescriptions	102	20.9
Increased health education/prevention (e.g., healthy eating, disease prevention, etc.)	99	20.3
Other	72	14.8
Increased number of healthcare providers	68	13.9
Dental care options	64	13.1
Healthcare assistance for older adults	60	12.3
Availability of transportation for health services	53	10.9
Children health services	42	8.6
Healthcare assistance for veterans/military	26	5.34
Tobacco use cessation (quitting) services	25	5.1
Maternal health services	22	4.5
Prevention of infant mortality	2	0.4

Note: Percent based on total N (487). Each person may have selected more than one option. Totals will not equal 100%.

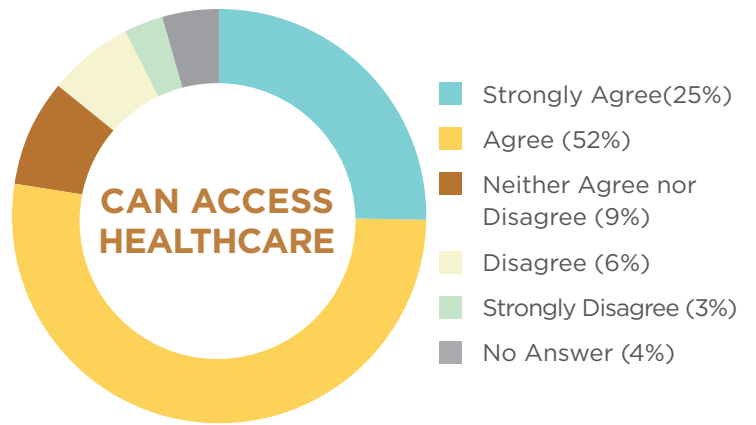


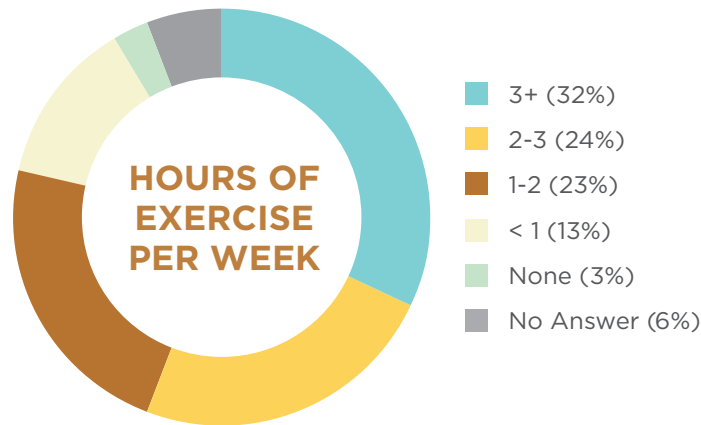
Table 35. I can access the healthcare I need in this community.

Answer	Frequency	%	Mean
Strongly Disagree	15	3.1	
Disagree	31	6.4	
Neither Agree nor Disagree	42	8.6	3.94
Agree	254	52.2	
Strongly Agree	123	25.3	
Not answered	21	4.4	

Table 37. What are the top three needs related to physical health in your community – Other Comments

Answer	Frequency
Substance abuse prevention/treatment	4
Access to affordable healthy foods	3
Access to high quality physicians/specialists	3
Mental health services	3
Indoor pool	2
Community recreation center	1
Affordable orthodontics	1
Breastfeeding resources	1
Children mental health services	1
Financial education	1
High quality school lunches	1
Urgent care	1
Youth activities	1

Note: Not all persons who answered “other” to this question gave a specific example.



Physical Activity

Table 38. During a normal week, other than in your regular job, how many hours a week do you engage in any physical activity or exercise?

Answer	Frequency	%
None	14	2.9
Less than 1 hour	62	12.7
1-2 hours	111	22.8
2-3 hours	116	23.8
3 hours or more	157	32.2
Not answered	27	5.6

Table 39. Where do you go to exercise or engage in physical activity?

Answer	Frequency	%
Home	298	61.2
Neighborhoods	159	32.6
Park	122	25.1
Private gym/studio	120	24.6
Public Recreation Center	50	10.3
Other	47	9.7
Schools	19	3.9

Note: Percent based on total N (487). Each person may have selected more than one option. Totals will not equal 100%.

Table 40. Where do you go to exercise or engage in physical activity – Other Comments

Answer	Frequency
Hiking/Walking trails	7
Work	4
Church	4
Cycling/Biking	4
Golf	3
Pool	2
Senior Center	2
Mall	1

Note: Not all persons who answered “other” to this question gave a specific example.

Table 41. If you don't exercise, what are the reasons you do not exercise?

Answer	Frequency	%
Other	22	4.5
I don't have enough time to exercise.	18	3.7
I don't like to exercise.	16	3.3
My job is physical or hard labor.	3	0.6
Exercise is not important to me.	3	0.6
It costs too much to exercise.	3	0.6
I don't know how to find exercise partners.	2	0.4
I would need child care and I don't have it.	0	0.0
There is no safe place.	0	0.0

Note: Percent based on total N (487). Each person may have selected more than one option. Totals will not equal 100%.

Table 42. If you don't exercise, what are the reasons you do not exercise – Other Comments

Answer	Frequency
Medical Condition	3
Note: Not all persons who answered "other" to this question gave a specific example.	

Table 43. There are enough options for physical activity in this community.

Answer	Frequency	%	Mean (Range 1-5)
Strongly Disagree	20	4.1	3.44
Disagree	85	17.5	
Neither Agree nor Disagree	87	17.9	
Agree	217	44.6	
Strongly Agree	50	10.3	
Not answered	27	5.6	

Table 44. This community values physical activity.

Answer	Frequency	%	Mean
Strongly Disagree	6	1.2	3.58
Disagree	43	8.8	
Neither Agree nor Disagree	126	25.9	
Agree	254	52.2	
Strongly Agree	29	6.0	
Not answered	29	6.0	

Nutrition

Table 45. Overall, I eat healthy foods.

Answer	Frequency	%	Mean
Strongly Disagree	0	0.0	3.84
Disagree	30	6.2	
Neither Agree nor Disagree	66	13.6	
Agree	308	63.2	
Strongly Agree	53	10.9	
Not answered	30	6.1	

Table 46. In a typical day, how many times do you eat fruit and/or vegetables?

Answer	Frequency	%
None	8	1.6
Once	66	13.5
Twice	153	31.4
Three times	142	29.1
Four or more times	87	17.8
Not answered	32	6.6

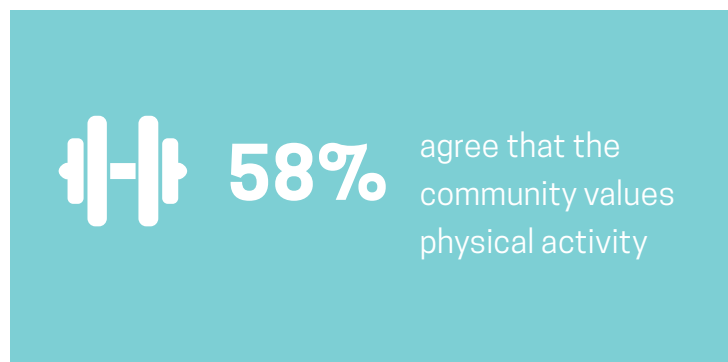


Table 47. If you don't eat enough fruits and vegetables (2 cups of each) on a typical day, what are the reasons you do not?

Answer	Frequency	%
Not applicable; I eat enough fruits and vegetables.	176	36.1
It costs too much.	76	15.6
I don't have enough time to purchase and prepare them.	66	13.6
Other	58	11.9
I don't like all or some of them.	54	11.1
Others in my household don't like all or some of them.	38	7.8
I'm not able to get to a grocery store.	21	4.3
I don't know how to cook them.	11	2.3
I have dietary restrictions due to a medical condition.	4	0.8
I have dietary restrictions due to religious beliefs/customs.	0	0.0

Note: Percent based on total N (487). Each person may have selected more than one option. Totals will not equal 100%.

Table 48. If you don't eat enough fruits and vegetables (2 cups of each) on a typical day, what are the reasons you do not – Other Comments

Answer	Frequency
Not a priority	17
Busy lifestyle	3
Low quality in the area	3
Spoils too quickly	2
Not available in the area	1
Daily recommendations are too much	1
Dental problems	1
Note: Not all persons who answered "other" to this question gave a specific example.	

Table 49. This community values healthy eating.

Answer	Frequency	%	Mean (Range 1-5)
Strongly Disagree	4	0.8	3.34
Disagree	68	14.0	
Neither Agree nor Disagree	185	38.0	
Agree	175	35.9	
Strongly Agree	14	2.9	
Not answered	41	8.4	

Table 50. I can access the healthy food I need in this community.

Answer	Frequency	%	Mean
Strongly Disagree	10	2.1	3.54
Disagree	61	12.5	
Neither Agree nor Disagree	81	16.6	
Agree	263	54.0	
Strongly Agree	36	7.4	
Not answered	36	7.4	

Table 51. Are you often concerned about having enough food for you and/or your family to eat?

Answer	Frequency	%
Yes	41	8.4
No	408	83.8
Not answered	38	7.8

Tobacco Use/Smoking

Table 52. Do you currently smoke/use tobacco products?

Answer	Frequency	%
Yes	42	8.6
No	409	84.0
Not answered	36	7.4

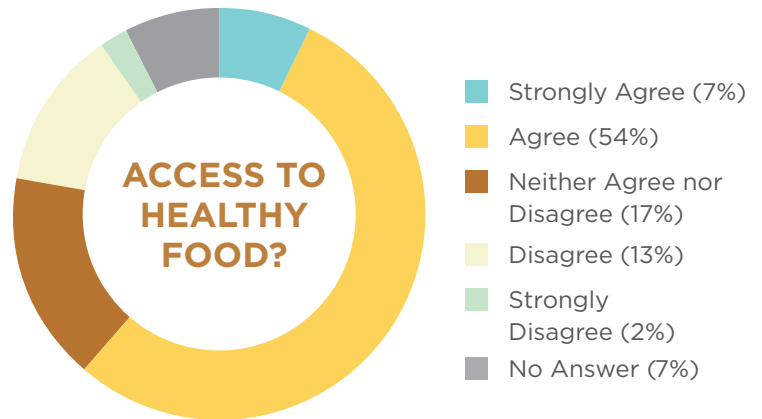


Table 53. Where would you go for help if you wanted to quit?

Answer	Frequency	%
Doctor	21	50.0
I don't know	7	16.7
KS Quitline	6	14.3
Other	3	7.1
Church	2	4.8
Not applicable; I don't want to quit.	1	2.4
Private counselor/therapist	1	2.4
Pharmacy	0	0.0
Health Department	0	0.0

Note: Percent based on n=42. Not all smokers may have answered but each person may have selected more than one option. Totals will not equal 100%.

Table 54. Where would you go for help if you wanted to quit?

– Other Comments

Answer	Frequency
By Myself - I don't need assistance	2
Note: Not all persons who answered "other" to this question gave a specific example.	

SUMMARY OF FINDINGS

It is estimated that 4.33% of Kansans over the age of 18 have experienced a serious mental illness in the last year (National Survey on Drug Use and Health, 2011-2012). For Pottawatomie County, 2013 BRFSS data showed that a higher percentage of residents reported poor mental health in general and depression specifically than is average for Kansas. At the same time, there is a significant lack of mental health service providers in the county. On the community needs assessment survey, none of the respondents indicated that their mental health was poor at the time of the survey, but as noted previously (in the Physical Health section), 7.6% of respondents reported having been diagnosed with mental illness of any type at some time, with depression being the diagnosis mentioned most frequently. Other data related to mental health includes the following:

- Just over 18% of respondents reported that they consult a professional when their mental health is

not good (57.5% indicated that their mental health is always good), and the majority (70.1%) said they would go to a private practitioner followed by a community mental health center (11.7%).

- Although responses were spread across the scale from strongly disagree to strongly agree, 78.4% were either neutral or disagreed to some extent with the statement: “This community has adequate mental health services for people who need them.”
- For responses regarding mental health needs in the community, the top ranked items focused on access and affordability. Specifically, the top five needs are:
 1. Affordable mental health services
 2. Affordable health insurance that include mental healthcare
 3. High quality mental health services
 4. Increased mental health education/prevention
 5. Increased number of mental healthcare providers

See Tables 55 through 61 for specific data related to mental health.

SECONDARY MENTAL HEALTH DATA

Table 55. Selected secondary mental health data.

Mental Health	Pottawatomie County	Kansas	Source
Percent of adults reporting that mental health was not good on 14 or more days in the past 30 Days, 2013	12.9%	9.7%	BRFSS
Percent of adults ever diagnosed with a depressive disorder, 2013	26.6%	18.1%	BRFSS
Percent of Medicare recipients with depression, 2012	14.6%	16.2%	Centers for Medicare & Medicaid Services
Percent of Medicare recipients with schizophrenia and other psychotic diagnoses, 2012	4.3%	4.0%	Centers for Medicare & Medicaid Services
Rate of children Under 18 hospitalized for mental health (per 1,000), 2013	0.59	2.61	Kansas Kids Count
Ratio of population to mental health providers, 2014	11,151:1	861:1	Robert Wood Johnson Foundation County Health Rankings

MENTAL HEALTH SURVEY DATA

Table 56. How would you describe your overall mental health? (n=436)

Answer	Frequency	%	Mean (Range 1-5)
Poor	0	0.0	4.17
Fair	19	4.3	
Good	82	18.8	
Very Good	140	32.0	
Excellent	195	44.6	
Not Sure	1	0.2	

Table 57. Do you consult a mental health professional when your mental health is not good? (n=435)

Answer	Frequency	%
Yes	80	18.4
No	105	24.1
My mental health is always good.	250	57.5

Table 58. Where do you go most often when your mental health is not good? (n=77)

Answer	Frequency	%
Private practice	54	70.1
Community mental health center	9	11.7
Hospital emergency room	0	0.0
Fort Riley	3	3.9
Other	11	14.3

Table 59. This community has adequate mental health services for people who need them. (n=415)

Answer	Frequency	%	Mean (Range 1-5)
Strongly Disagree	37	8.9	3.02
Disagree	120	28.9	
Neither Agree nor Disagree	168	40.5	
Agree	81	19.5	
Strongly Agree	9	2.2	

Table 60. What are the top three needs related to mental health in your community?

Answer	Frequency	%
Affordable mental health services	168	34.5
Affordable health insurance that includes mental healthcare	145	29.8
High quality mental health services	140	28.7
Increased mental health education/prevention	127	26.1
Increased number of mental healthcare providers	117	24.0
Substance abuse prevention/treatment	110	22.6
Children mental health services	99	20.3
Affordable prescriptions	54	11.1
Availability of transportation for mental health services	53	10.9
Other	19	3.9

Percent based on total N (487). Each person may have selected more than one option. Totals will not equal 100%

Table 61. What are the top three needs related to mental health in your community– Other Comments

Answer	Frequency
Affordable substance abuse treatment	1
High quality inpatient facilities	1
Housing options for people with chronic mental illness	1
Mental health services for those without insurance	1
Mental health services with a spiritual component	1
More physical activity options	1
Veteran services	1

Note: Not all persons who answered “other” to this question gave a specific example.



Social Issues

SUMMARY OF FINDINGS

Social issues is a broad topic area that encompasses such foundational concerns as poverty and resulting problems like substance abuse, crime, suicide, and others. Although the topics included in the secondary data and survey are in no way exhaustive of the social issues facing Pottawatomie County, they provide an overview of some of the concerns that tend to have the greatest impact on a community. Remarkably, Pottawatomie County shows a more positive picture related to the social issues listed below than is average for the state on most topics except adult binge drinking. Fewer persons, including children, tend to be below the poverty level, rates for crimes and other problem behaviors are relatively low, and graduation rates are relatively high. This is not to say that social issues are not a problem, no matter how minimal the prevalence. The data from the survey indicate community concern regarding substance abuse for youth and adults, manufacture of drugs (e.g., methamphetamine), inattentive driving, and poverty. Survey data also indicate that discrimination based on sexual orientation and race is experienced by a small percentage of respondents (8.2%). The key findings of the survey are:

- The large majority of respondents indicated that they do not personally experience social issues such as substance abuse, domestic violence, or homelessness. This is likely due to a limitation in

sampling those who experience these issues or discomfort in disclosing this information.

- Fourteen percent (14%) of respondents reported that they or someone in their household has a disability.
- Discrimination due to sexual orientation and race were both reported by over 8% of the respondents. Discrimination related to sexual orientation and/or race appears most likely to occur in employment and public accommodations.
- Four of the top seven concerns of respondents are directly related to substance abuse including youth and adult alcohol or drug use, manufacture or selling of drugs, and drinking and driving. Mental illness is also in the top seven and is often related to substance use.
- The top five needs related to social issues are:
 1. Positive activities for youth
 2. Availability of services for people with low income
 3. Availability of employment
 4. Child care
 5. Availability of mental health services

See Tables 62 through 71 for specific data related to social issues.

SECONDARY SOCIAL ISSUES DATA

Table 62. Selected secondary social issues data.

Social Issues	Pottawatomie County	Kansas	Source
Percent of persons (all ages) below federal poverty level, 2012	9.9%	14.0%	US Census Bureau Small Area Income and Poverty Estimates
Percent of persons under 18 below federal poverty line, 2012	13.2%	19.0%	US Census Bureau Small Area Income and Poverty Estimates
Rate of single parent households (per 1,000), 2010	63.88%	89.76%	Kansas Child and Family Well-being Indicators (KSU and Dept. for Children and Families)
Percent of county population receiving child care assistance, 2010	0.2%	0.65%	Kansas Child and Family Well-being Indicators (KSU and Dept. for Children and Families)
Percent of 9th grade public school students enrolled in 2009-10 who graduated in 2012- 2013	93.43%	85.83%	Kansas Kids Count
Rate of infant mortality (deaths per 1000 live births), 2013	5.67	6.39	Kansas Kids Count
Rate of teen pregnancy (per 1,000), 2012	8.7	19.7	KDHE
Percent of adults who are binge drinkers, 2013	20.6%	15.4%	BRFSS
Index of crime offenses (per 1,000), 2013	17.0	31.4	Kansas Bureau of Investigation
Rate of violent crime (per 1,000), 2013	1.7	3.2	Kansas Bureau of Investigation
Rate of teen violent deaths (per 100,000 15- to 19-year-olds due to suicide, homicide, or motor vehicle accident), 2011	0.00	29.83	Kansas Kids Count
Deaths due to suicide, 2012	2	505	KDHE
Number of domestic violence incidents, 2012	113	24,373	Kansas Bureau of Investigation
Number of domestic violence arrests, 2012	49 (41.6% arrest rate)	14,102 (57.9% arrest rate)	Kansas Bureau of Investigation
Number of rape incidents (per 1,000), 2012	2	1,069	Kansas Bureau of Investigation
Number of rape arrests, 2012	2 (100% arrest rate)	222 (20.8% arrest rate)	Kansas Bureau of Investigation
Percent of alcohol-impaired driving deaths, 2008 - 2012	23.1	34.7	Kansas Health Matters



SOCIAL ISSUES SURVEY DATA

Table 63. Do you or anyone in your household have a substance use issue (e.g., drink too much alcohol, have a problem with legal or illegal drugs)?

Answer	Frequency	%
Yes	25	5.8
No	408	94.2
Not answered	54	

Table 64. Do you or anyone in your household currently experience domestic violence (e.g., violence between adult partners)?

Answer	Frequency	%
Yes	5	1.2
No	426	98.8
Not answered	56	

Table 65. Excluding mental illness, do you or anyone in your household have a physical or developmental disability?

Answer	Frequency	%
Yes	60	14.0
No	368	86.0
Not answered	59	

Table 66. Are you or anyone in your immediate family currently homeless (e.g., no permanent place to live on a daily basis)?

Answer	Frequency	%
Yes	4	0.9
No	425	99.1
Not answered	58	

Table 67. Have you personally experienced or witnessed discrimination in this community based on any of the following?

Response	% Experiencing Any Discrimination	Setting		
		% Housing	% Public Accommodations	% Employment
Sexual Orientation	8.2	1.6	4.7	2.3
Race	8.2	1.0	2.1	7.8
Age	8.0	2.5	5.5	3.1
Disability	6.4	0.8	2.9	5.3
Gender	6.4	0.6	3.7	2.7
Ethnicity	6.0	2.1	4.1	4.1
Religion	4.7	1.4	3.3	1.8
Gender Identity	4.3	0.8	3.3	2.3

Note: Percent based on total N (487). Each person may have selected more than one option. Totals will not equal 100%.

Table 68. Please choose the top three social issues that are of most concern in your community

Answer	Frequency	%
Youth drug or alcohol use	185	38.0
Inattentive driving	117	24.0
Adult drug or alcohol use	105	21.6
Manufacture or selling of drugs	102	20.9
Poverty	102	20.9
Drinking and driving	91	18.7
Mental illness	61	12.5
Hunger	53	10.9
Property crime	44	9.0
Cybercrime	41	8.4
Child physical or sexual abuse	35	7.2
Domestic violence	34	7.0
Teen pregnancy	31	6.4
Homelessness	26	5.3
Discrimination	18	3.7
Other	15	3.1
Violent crime	14	2.9
Elder abuse	0	0.0
Suicide	0	0.0
Youth/gang violence	0	0.0

Note: Percent based on total N (487). Each person may have selected more than one option. Totals will not equal 100%.

Table 69. Please choose the top three social issues that are of most concern in your community - Other Comments

Answer	Frequency
Unsupervised children	2
Maternal healthcare	1
Lack of education	1
Mass incarceration	1
Diversity issues	1
Lack of high paying jobs	1
Road rage	1
Undertrained workforce	1

Table 70. What are the top three needs related to social issues in your community?

Answer	Frequency	%
Positive activities for youth	186	38.2
Availability of services for people with low incomes	114	23.4
Availability of employment	110	22.6
Child care	87	17.9
Availability of mental health services	86	17.7
Options for arts and entertainment activities	85	17.5
Substance abuse prevention or treatment	59	12.1
Availability of support groups/peer support	55	11.3
Housing options for homeless persons	48	9.9
Better enforcement of laws	46	9.4
Services for older adults	44	9.0
Services to veterans/military	44	9.0
Services for persons with disabilities	31	6.4
Other	19	3.9
Changing local laws	16	3.3
Services for domestic/sexual violence survivors	14	2.9

Note: Percent based on total N (487). Each person may have selected more than one option. Totals will not equal 100%.

Table 71. What are the top three needs related to social issues in your community? - Other Comments

Answer	Frequency
Affordable legal services	2
Reduce crime	2
Public transportation	2
Affordable child care	1
Better city government	1
Community recreation center	1
Elder abuse intervention	1
Financial education	1
More preschool options	1
Need more activities for children and adults	1

Children and Youth

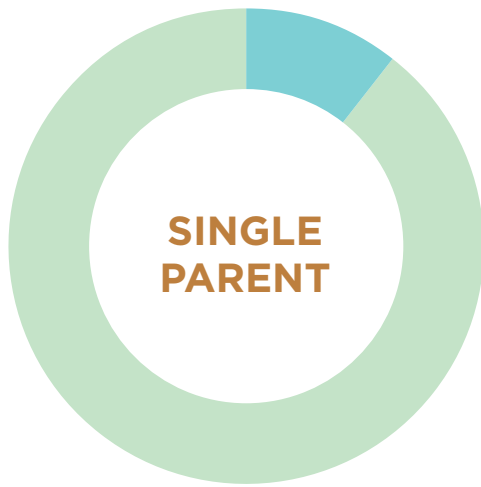
SUMMARY OF FINDINGS

According to the 2010 Census, nearly 35% of Pottawatomie County family households include children under the age of 18. In comparison, 42.9% of the respondents to the community survey indicated that they have children under the age of 18. In general, the responses to the community survey are relatively consistent with secondary data that indicate that Pottawatomie County children and youth fare well as compared to state averages. Fewer children live in poverty, experience perinatal and neonatal health risks, use alcohol or other drugs, or fail to graduate than is typical for Kansas. The only indicator on which Pottawatomie compares slightly unfavorably to the state average is for smokeless tobacco use among 6th, 8th, 10th, and 12th graders; however, the favorable comparison to state averages does not mean that there are not significant needs related to children and youth in Pottawatomie County.

Responses to the survey highlight this issue with child care for young children being the number one need. Employment opportunities were identified as the number one need for older youth. Other key findings from the survey are:

- Of the respondents to this section of the survey, approximately 11% are single parents, just over 9% have kids with developmental disabilities, over 2% have children with physical disabilities, almost 7% have children with a chronic disease, and over 10% have children with a mental illness.
- The majority are satisfied with the education their children are receiving.
- Over 16% report that their child has been afraid to attend school or activities due to bullying.
- Over 45% are dissatisfied with non-school activities.
- Of those who use child care, over 97% are satisfied with it; however, nearly half are not satisfied with child care options, and 40.5% report that their child care is not affordable.
- When asked to rate how well the community meets the needs of children and youth, needs of mothers for whom English is not their first language, needs of children for whom English is not their first language, and youth employment are the issues that were rated lowest.
- The top ranked needs for children ages 0 to 12 are:
 1. Afterschool programs
 2. Recreational activities
 3. Parenting education/skills development
 4. Child care for children 0-5
 5. Financial assistance to families (for nutrition, child care, housing, etc.)
- The top ranked needs for youth ages 13 to 18 are:
 1. Employment opportunities for teens
 2. Recreational activities
 3. Financial skills training
 4. Substance abuse prevention/treatment
 5. Workforce training for teens

See Tables 72 through 94 for specific data related to children and youth.



■ Yes (11%)
■ No (89%)



■ Yes (90%)
■ No (10%)



■ Yes (55%)
■ No (45%)



SECONDARY CHILDREN AND YOUTH DATA

Table 72. Selected secondary children and youth data.

Children and Youth	Pottawatomie County	Kansas	Source
Percent of births with inadequate prenatal care, 2010-2012	10.1%	11.7%	Kansas Department of Health and Environment
Percent of births with reported smoking by mothers during pregnancy, 2012	9.2%	13.7%	Kansas Department of Health and Environment
Percent of premature births (less than 37 weeks of completed gestation), 2012	8.4%	9.0%	Kansas Department of Health and Environment
Rate of infant mortality (deaths under age 1 per 1000 live births), 2013	5.67	6.39	Kansas Kids Count
Percent of infants fully immunized at 24 months, 2012	79.0%	71.7%	Kansas Department of Health and Environment
Percent of live births to mothers without a high school diploma, 2013	3.78%	14.59%	Kansas Kids Count
Rate of single parent households (per 1000), 2010	63.88	89.8	Kansas Child and Family Well-being Indicators (KSU and Dept. for Children and Families)
Percent of children under age 18 living below federal poverty line, 2012	13.2%	19.0%	US Census Bureau Small Area Income and Poverty Estimates
Percent of children under 18 with no health insurance coverage, 2013	7.02%	7.07%	Kansas Kids Count
Average monthly enrollment of children under 19 in Medicaid, 2013	1,142	220,300	Kansas Kids Count
Percent of public school children participating in the free and reduced price lunch program, 2012-2013	34.52%	50.03%	Kansas Kids Count
Average monthly enrollment of children in the Kansas Food Assistance Program (SNAP Benefits), 2013	662	141,761	Kansas Kids Count



Children and Youth	Pottawatomie County	Kansas	Source
Average monthly enrollment of children in the Kansas Temporary Assistance for Families Program (TANF), 2013	63	15,419	Kansas Kids Count
Percent of county population receiving child care assistance, 2010	0.2%	0.65%	Kansas Child and Family Well-being Indicators (KSU and Dept. for Children and Families)
Percent of 9th grade public school students enrolled in 2009-10 who graduated in 2012- 2013	93.4%	85.8%	Kansas Kids Count
Rate of teen violent deaths (per 100,000 15- to 19-year-olds due to suicide, homicide, or motor vehicle accident), 2012	0.00	29.83	Kansas Kids Count
Percent of 6th, 8th, 10th and 12th graders who reported using cigarettes in the last 30 days, 2014	5.0%	5.8%	Kansas Communities That Care Survey
Percent of 6th, 8th, 10th and 12th graders who reported using smokeless tobacco in the last 30 days, 2014	6.8%	5.0%	Kansas Communities That Care Survey
Percent of 6th, 8th, 10th and 12th graders who reported binge drinking (having 5+ consecutive drinks on at least one occasion in the past two weeks), 2014	8.8%	9.8%	Kansas Communities That Care Survey
Percent of 6th, 8th, 10th and 12th graders who reported using marijuana in the last 30 days, 2014	5.18%	8.42%	Kansas Communities That Care Survey
Percent of 6th, 8th, 10th and 12th graders who reported using methamphetamine in the last 30 days, 2014	.14%	.81%	Kansas Communities That Care Survey
Rate of children under age 18 hospitalized for mental health (per 1,000 children), 2013	0.59	2.61	Kansas Kids Count

CHILDREN AND YOUTH SURVEY DATA

Table 73. Are you a parent or custodial grandparent/guardian of someone under 18?

Answer	Frequency	%
Yes	209	42.9
No	204	41.9
Not answered	74	15.2

The following questions were designed to be completed by ONLY those who indicated that they were parents, grandparents or guardians of children under 18. The percentages for each question were figured based on the number of respondents to that question (not on the total number of survey respondents like most questions).

Table 74. Are you a single parent?

Answer	Frequency	%
Yes	22	10.6
No	185	89.4

Table 75. Do any of your children have a developmental disability?

Answer	Frequency	%
Yes	19	9.2
No	188	90.8

Table 76. Do any of your children have a physical disability?

Answer	Frequency	%
Yes	5	2.4
No	202	97.6

Table 77. Do any of your children have a chronic disease?

Answer	Frequency	%
Yes	14	6.8
No	193	93.2

Table 78. Have any of your children been diagnosed with a mental illness or emotional disturbance?

Answer	Frequency	%
Yes	21	10.2
No	185	89.8

Table 79. Are you satisfied with the education your children are receiving?

Answer	Frequency	%
Yes	184	89.8
No	21	10.2

Table 80. Are your children home-schooled?

Answer	Frequency	%
Yes	5	2.4
No	201	97.6

Table 81. Have any of your children been afraid to attend school/ other activities due to bullying?

Answer	Frequency	%
Yes	34	16.6
No	171	83.4

Table 82. Are you satisfied with non-school activities for your children in your community?

Answer	Frequency	%
Yes	113	54.6
No	94	45.4

Table 83. Have you ever quit or lost a job because you did not have the child care you needed?

Answer	Frequency	%
Yes	15	7.3
No	191	92.7

Table 84. Do you use child care for your children?

Answer	Frequency	%
Yes	74	34.3
No	142	65.7

Table 85. What type of child care do you use? Check all that apply.

Answer	Frequency	%
Licensed day care home	41	34.2
Relative or friend	26	21.7
Child care center	22	18.3
Preschool	18	15.0
Afterschool/latchkey program	11	9.2
Group day care home	2	1.7
Other	0	0.0

Table 86. Are you satisfied with the quality of the child care you currently receive?

Answer	Frequency	%
Yes	72	97.3
No	2	2.7

Table 87. Are you satisfied with the child care options that are available to you?

Answer	Frequency	%
Yes	39	52.7
No	35	47.3

Table 88. Do you receive any type of child care assistance?

Answer	Frequency	%
Yes	2	2.7
No	72	97.3

Table 89. Is your child care affordable?

Answer	Frequency	%
Yes	44	59.5
No	30	40.5

Table 90. In your opinion, how well does your community generally meet the needs of children and/or adolescents in the following areas?

Statement	N	Very Poor	Poor	Fair	Good	Very Good	Mean (1-5)
Quality education	355	0.6%	3.1%	9.3%	43.1%	43.9%	4.27
Volunteer opportunities	329	0.6%	4.9%	17.0%	46.8%	30.7%	4.02
Physical health	334	0.9%	3.6%	18.0%	53.0%	23.7%	3.96
College or career preparation	320	2.5%	6.3%	15.6%	47.5%	28.1%	3.93
Postnatal care (birth through first year)	276	2.9%	6.9%	19.2%	40.2%	30.8%	3.89
Quality of child care for children 0-5	296	2.7%	7.1%	19.3%	47.0%	24.0%	3.82
Dental health	329	1.8%	10.0%	17.3%	46.5%	24.3%	3.81
Prenatal care (pregnancy)	268	4.1%	9.0%	18.7%	42.5%	25.7%	3.77
Violence/bullying prevention	279	3.2%	8.2%	23.7%	45.9%	19.0%	3.69
Needs of children/youth with disabilities	230	3.5%	9.1%	23.5%	43.9%	20.0%	3.68
Recreational opportunities	357	2.2%	11.2%	26.3%	37.8%	22.4%	3.67
Access to child care for children 0-5	302	4.0%	11.9%	23.5%	40.7%	19.9%	3.61
Prenatal support/training	266	2.6%	13.9%	28.2%	40.2%	15.0%	3.51
Basic needs of low-income children/youth	239	5.4%	15.5%	35.1%	33.5%	10.5%	3.28
Mental health	267	6.4%	21.3%	30.3%	34.8%	7.1%	3.15
Support for single parents	200	8.0%	24.0%	32.0%	27.5%	8.5%	3.05
Employment for youth	277	9.4%	24.5%	33.6%	27.1%	5.4%	2.95
Needs of children whose first language isn't English	145	11.0%	26.9%	28.3%	24.8%	9.0%	2.94
Needs of mothers whose first language isn't English	139	12.9%	29.5%	29.5%	20.1%	7.9%	2.81



Table 91. What are the top three needs related to children (0-12) in your community?

Answer	Frequency	%
Afterschool programs	163	33.5
Recreational activities	103	21.1
Parenting education/skills development	88	18.1
Child care for children 0-5	83	17.0
Financial assistance to families (for nutrition, child care, housing, etc.)	83	17.0
Mentoring programs for children	77	15.8
Bullying prevention	60	12.3
Early childhood intervention programs (e.g., Head Start, etc.)	46	9.4
Nutrition programs (e.g. WIC, free and reduced lunch, etc.)	41	8.4
Dental care	35	7.2
Mental healthcare	30	6.2
Transportation	29	6.0
Medical care	28	5.7
Other	17	3.5
Public education	0	0.0
Services for children with physical or developmental disabilities	0	0.0

Note: Percent based on total N (487). Each person may have selected more than one option. Totals will not equal 100%.

Table 92. What are the top three needs related to children (0-12) in your community? – Other Comments

Answer	Frequency
Community recreation center with an indoor pool	2
Montessori preschool	1
Summer camp options	1
More parks/natural spaces	1

Table 93. What are the top three needs related to adolescents (13-18) in your community?

Answer	Frequency	%
Employment opportunities for teens	103	21.1
Recreational activities	88	18.1
Financial skills training	87	17.9
Substance abuse prevention/treatment	70	14.4
Workforce training for teens	68	14.0
Mentoring programs for adolescents	58	11.9
Appropriate internet/technology use (e.g., sexting, cyberbullying, etc.)	54	11.1
Bullying/relationship violence prevention	50	10.3
Obesity prevention	37	7.6
Parenting education/skills development (for parents of adolescents)	37	7.6
Access to higher education group	35	7.2
Teen pregnancy prevention/sex education	33	6.8
Cultural enrichment opportunities	28	5.7
Public education	28	5.7
Mental Healthcare	21	4.3
Tutoring	19	3.9
Services for children with physical or developmental disabilities	14	2.9
Transportation	14	2.9
Other	11	2.3
Access to technology/computers	10	2.1
Dental care	9	1.8
Medical care	4	0.8
Opportunities to contribute to the community (e.g., volunteering, leadership development, participation in community decision-making)	0	0.0

Note: Percent based on total N (487). Each person may have selected more than one option. Totals will not equal 100%.

Table 94. What are the top three needs related to adolescents (13-18) in your community? – Other Comments

Answer	Frequency
Comprehensive sex education	1
Positive outlets	1

TOP THREE NEEDS RELATED TO CHILDREN (0-12)

1	Afterschool Programs
2	Recreational Activities
3	Parenting Education

TOP THREE NEEDS RELATED TO ADOLESCENTS (13-18)

1	Employment opportunities for teens
2	Recreational Activities
3	Financial skills training

Education

SUMMARY OF FINDINGS

The population of Pottawatomie County has more high school graduates but slightly fewer persons with a bachelor’s degree or above than the state average. On a number of measures compiled by Kansas Action for Children (Kansas Kids Count), Pottawatomie County fares better than average for the state related to early childhood and K-12 education. The exceptions are having slightly fewer Early Head Start slots and schools offering all-day/everyday kindergarten. Survey responses also indicate overall satisfaction with education in Pottawatomie County with some concerns regarding ways to maintain quality. Other key survey findings are:

- Respondents rated the quality of schools and up-to-date technology highest but the availability of afterschool programs and amount of money spent per student were rated lowest.

- The top five identified needs are:
 1. Getting and keeping good teachers
 2. Increased expectations for student achievement
 3. Increased parental involvement
 4. Equality in funding among school districts
 5. More artistic and musical activities

Note: Because education has the potential to impact everyone in the community, it was determined that responding to this section should not be limited to those who have or had children in Pottawatomie County schools. Therefore, responses should reflect the perceptions of those who have direct experience with the local K-12 educational system as well as those who do not.

See Tables 95 through 98 for specific data related to education.

SECONDARY EDUCATION DATA

Table 95. Selected secondary education data.

Education	Pottawatomie County	Kansas	Source
Number of Early Head Start slots per 100 children (0-3 years of age) below 100% of poverty, 2013	5.62	7.25	Kansas Kids Count
Number of Head Start slots available per 100 children (3-4 years of age) below 100% of poverty, 2013	53.41	39.78	Kansas Kids Count
Percent of elementary schools that offer Pre-K or Four-Year-Old At-Risk Program, 2013-2014	50.0%	50.38%	Kansas Kids Count
Percent of elementary schools that offer full-day and every day kindergarten, 2013-2014	83.33%	86.65%	Kansas Kids Count
Percent of 5th graders meeting standards, exceeding standards or scoring exemplary on reading assessments, 2012-2013	89.13%	84.91%	Kansas Kids Count
Percent of 9th grade public school students enrolled in 2009-10 who graduated in 2012- 2013	93.43%	85.83%	Kansas Kids Count
Percent of K-12 public schools that meet the Adequate Yearly Progress requirements, 2012	90.91%	79.57%	Kids Count Data Center
Percent of persons 25+ who graduated high school or higher, 2008 - 2012	93.9%	89.7%	US Census Bureau State and County QuickFacts
Percent of persons 25+ with bachelor’s degree or higher, 2008-2012	28.5%	30.0%	US Census Bureau State and County QuickFacts

EDUCATION SURVEY DATA

Table 96. How would you rate K-12 education in your community in the following areas?

Statement	N	Very Poor	Poor	Fair	Good	Very Good	Mean (1-5)
The quality of the schools your child attends	256	0.0%	1.2%	7.8%	43.4%	47.7%	4.38
The availability for up-to-date technology for students to use.	308	0.6%	2.3%	5.8%	46.4%	44.8%	4.32
The quality of teachers	327	0.0%	1.8%	7.3%	51.4%	39.4%	4.28
The overall quality of schools.	336	0.0%	2.1%	7.4%	51.8%	38.7%	4.27
The quality of school buildings.	338	0.6%	0.6%	11.8%	46.2%	40.8%	4.26
The availability of extracurricular programs, clubs, or sports.	325	0.9%	2.2%	13.8%	50.5%	32.6%	4.12
The quality of curriculum.	302	1.7%	5.3%	13.2%	51.0%	28.8%	4.00
The availability of support resources at the school (counselors, tutors, etc.).	299	0.7%	4.3%	18.1%	50.2%	26.8%	3.98
The amount of parental involvement in the child's education.	295	1.0%	4.4%	19.0%	47.8%	27.8%	3.97
The amount of money a school spends per student.	257	2.7%	7.4%	22.2%	46.3%	21.4%	3.76
Availability of afterschool programs.	268	8.6%	16.8%	33.2%	28.7%	12.7%	3.20

Table 97. What are the top three needs regarding education in your community?

Answer	Frequency	%
Getting and keeping good teachers	126	25.9
Increased expectations for student achievement	96	19.7
Increased parental involvement	78	16.0
Equality in funding among school districts	63	12.9
More artistic and musical activities	57	11.7
Increased quality of curriculum	54	11.1
Addressing overcrowding in schools	49	10.1
Addressing bullying	44	9.0
Increased student discipline	41	8.4
More extracurricular activities	41	8.4
Other	32	6.6
Addressing the condition of school buildings	29	6.0
Availability of physical activities and sports	29	6.0
Availability of quality computers and technology	29	6.0
Addressing fighting, violence, and/or gangs	15	3.1
Increased amount of time students spend in school	0	0.0
Increased quality of instruction by teachers	0	0.0
More involvement of students in decision-making	0	0.0
Raising standardized test scores	0	0.0
Updated textbooks	0	0.0

Note: Percent based on total N (487). Each person may have selected more than one option. Totals will not equal 100%.

Table 98. What are the top three needs regarding education in your community? – Other Comments

Answer	Frequency
Afterschool programs	2
Teacher support	2
Gifted program	1
Quality administration	1
Quality special education	1
Changing the high school grading policy	1
More time outside	1

Answer	Frequency
Less church involvement in schools	1
Less focus on sports	1
Montessori preschool/kindergarten	1
Efficient use of funding per child	1
Quality teachers	1
Individualized instruction	1
Youth accountability	1

Aging

SUMMARY OF FINDINGS

According to the U.S. Census American Community Survey (2013 estimate), the number of adults who are age 65 or older in Pottawatomie County is lower than the state average (7.3% versus 14.0% for Kansas), but the majority of respondents to the survey believe the community is supportive of healthy aging and there are adequate services for older adults. At the same time, survey findings indicate that there may be a need for additional resources for older adults and their caregivers. Some questions in this section were asked of all respondents while others were directed at persons who were age 55 or older. The key findings for survey questions to all respondents and those who were age 55 or older are:

Findings from questions for all respondents:

- Over 60% responded that they agree or strongly agree that the community is supportive of healthy aging. Only six percent (6%) disagreed with this statement.
- When asked if there were enough services for older adults in the community, over 50% agreed or strongly agreed, but nearly one-third (33.2%) were neutral.
- Nearly 12% of respondents indicated that they are caretakers for someone 55 or older. Nearly 30% indicated that they do not have the services they need as a caregiver.

- The top five needs related to aging as identified by all respondents are:
 1. Affordable housing
 2. Independent living in the home
 3. Transportation
 4. Ease of mobility in the community
 5. Affordable prescriptions

Findings from questions for persons age 55 or older:

- When asked about factors that are most important to them, those who identified as age 55 or older mentioned issues related to health and independence most frequently. The top five priorities for those age 55 or older are:
 1. Staying healthy
 2. Being able to stay in your own home.
 3. Having adequate health insurance coverage
 4. Staying mentally sharp
 5. Spending time with family and friends

See Tables 99 through 107 for specific data related to aging.

TOP THREE NEEDS FOR OLDER ADULTS

Affordable Housing 

Independent living in the home 

Transportation 

SECONDARY AGING DATA

Table 99. Selected secondary aging data.

Aging	Pottawatomie County	Kansas	Source
Percent of population 65 years and over, 2013	7.3%	14.0%	US Census Bureau State and County QuickFacts
Number of assisted living facilities (regulated by KDADS), 2014	3	211	Kansas Department for Aging and Disability Services
Nursing homes (regulated by KDADS), 2014	3	311	Kansas Department for Aging and Disability Services
Number of persons enrolled in Medicare (hospital and/or supplemental medical for aged), 2012	2,930	378,549	Centers for Medicare and Medicaid Services

AGING SURVEY DATA

The following questions were asked of all respondents regardless of their age.

Table 100. This community is supportive of healthy aging.

Answer	Frequency	%	Mean (Range 1-5)
Strongly Disagree	0	0.0	3.64
Disagree	23	6.0	
Neither Agree nor Disagree	114	29.8	
Agree	222	58.0	
Strongly Agree	24	6.3	
Not answered	104		

Table 101. The necessary senior services are available in this community.

Answer	Frequency	%	Mean (Range 1-5)
Strongly Disagree	2	0.5	3.50
Disagree	40	10.6	
Neither Agree nor Disagree	126	33.2	
Agree	188	49.6	
Strongly Agree	23	6.1	
Not answered	108		

Table 102. Choose the top three needs for older adults in your community

Answer	Frequency	%
Affordable housing	87	17.9
Independent living in the home	74	15.2
Transportation	66	13.6
Ease of mobility in the community	55	11.3
Affordable prescriptions	53	10.9
Assisted living options	48	9.9
Finances/Income	45	9.2
Caregiver support	44	9.0
Home healthcare options	43	8.8
Independent living in a retirement community	40	8.2
Day programs	39	8.0
Long term care options	37	7.6
Respite services for caregivers	32	6.6
Medical Care	29	6.0
Memory care options/dementia support	27	5.5
Health insurance	26	5.3
Employment	24	4.9
Access to daily meals	23	4.7
Mental health services	19	3.9
Other	19	3.9
Personal care services	17	3.5
Dental Care	12	2.5
Legal services	11	2.3
Safety	10	2.1
Hospice	8	1.6
Utility assistance	8	1.6
Vision Care	6	1.2
Substance abuse	4	0.8
Elder abuse	3	0.6

Table 103. Choose the top three needs for older adults in your community – Other Comments

Answer	Frequency
Lower taxes	2
Affordable assistance with home maintenance	1
Apartments for older adults	1
Health education	1
Range of dietary options	1
Volunteer opportunities	1
Physical activities	1

The following questions were asked of ONLY those who indicated they are caregivers for an older adult.

Table 104. Are you a caregiver for an older adult (spouse, parent, etc.)?

Answer	Frequency	%
Yes	44	11.7
No	332	88.3
Not answered	111	

Table 105. If yes, are you receiving the services you need?

Answer	Frequency	%
Yes	31	70.5
No	13	29.5

OLDER ADULT NEEDS ASSESSMENT

Table 106. Are you 55 years or older?

Answer	Frequency	%
Yes	139	36.4
No	243	63.6
Not answered	105	

The following questions were designed to be completed by ONLY those who indicated that they were 55 years or older.

Table 107. How important are the following in your life right now?

Statement	N	Not Important	Somewhat Important	Moderately Important	Important	Very Important	Mean
Staying healthy	142	0.0%	0.0%	0.0%	14.8%	85.2%	4.85
Being able to stay in your own home.	139	0.7%	1.4%	2.2%	14.4%	81.3%	4.74
Having adequate health insurance coverage	141	1.4%	0.0%	5.0%	21.3%	72.3%	4.63
Staying mentally sharp	142	0.7%	0.0%	3.5%	26.8%	69.0%	4.63
Spending time with family and friends	140	0.0%	1.4%	4.3%	28.6%	65.7%	4.59
Having enough money to live comfortably and do the things you want to do	138	0.0%	0.7%	5.8%	28.3%	65.2%	4.58
Affording the cost of out-of-pocket healthcare expenses and prescription drugs	141	2.1%	0.7%	6.4%	25.5%	65.2%	4.51
Having enough money to meet daily living expenses	140	0.7%	2.1%	7.9%	23.6%	65.7%	4.51
Protecting yourself from consumer fraud	139	1.4%	2.2%	7.2%	27.3%	61.9%	4.46
Saving money for everyday expenses like groceries, gasoline, and dining out	140	1.4%	5.0%	7.1%	34.3%	52.1%	4.31
Medicare benefits	139	7.9%	2.9%	3.6%	23.0%	62.6%	4.29
Enforcement of quality standards for nursing homes	139	2.2%	4.3%	7.9%	33.8%	51.8%	4.29
Learning New things	140	0.0%	0.7%	12.9%	43.6%	42.9%	4.29
Social Security Benefits	139	8.6%	2.9%	2.9%	24.5%	61.2%	4.27
Having quality long-term care for yourself or a family member	139	5.0%	2.2%	11.5%	33.8%	47.5%	4.17
Being able to use my cell phone with confidence	138	6.5%	5.1%	10.9%	34.8%	42.8%	4.02
Being able to volunteer in my community	140	5.0%	5.7%	15.0%	42.9%	31.4%	3.90
Being able to go online to use email and manage my finances with confidence	134	12.7%	4.5%	9.0%	35.8%	38.1%	3.82
Having access to public transportation	138	18.8%	9.4%	21.7%	31.2%	18.8%	3.22

Housing

SUMMARY OF FINDINGS

According to data from 2013 Census estimates, residents in Pottawatomie County are more likely than average for the state to own their home, with the median value of an owner-occupied home being \$152,900 for Pottawatomie compared to \$129,500 for Kansas. Consistent with these data, survey respondents noted a lack of affordable housing options as the number one need in the community. Other key findings from the survey are:

- Almost 90% of respondents reported owning their own home. This is higher than indicated by Census data (i.e., 77.9%).
- Of those who do not own their home, over 60% would prefer to own it.
- Over 60% of those who responded to the question indicated that there is a lack of affordable housing. This is echoed in the list of needs related

to housing in the community with “variety of affordable housing options” being selected by over 45% of the respondents.

- The top five identified needs regarding housing are:
 1. Variety of affordable housing options
 2. Higher quality rentals
 3. Assistance with property repair and maintenance
 4. Neighborhood improvement programs
 5. Code enforcement (e.g., overgrown lawns, broken windows, trash, etc.)

See Tables 108 through 115 for specific data related to housing.

SECONDARY HOUSING DATA

Table 108. Selected secondary housing data.

Housing	Pottawatomie County	Kansas	Source
Number of housing units, 2011-2013	8,776	1,237,481	US Census Bureau American Community Survey
Percent of vacant housing units, 2011-2013	7.2%	10.3%	US Census Bureau American Community Survey
Percent of homeownership, 2008-2012	77.9%	68.2%	US Census Bureau State and County QuickFacts
Percent of housing units in multi-unit structures, 2008-2012	6.20%	17.60%	US Census Bureau State and County QuickFacts
Median value of owner-occupied housing units, 2011-2013	\$152,900	\$129,500	US Census Bureau American Community Survey
Number of households, 2008-2012	7,908	1,109,391	US Census Bureau State and County QuickFacts
Number of persons per household, 2008-2012	2.69	2.5	US Census Bureau State and County QuickFacts

HOUSING SURVEY DATA

Table 109. Which of the following best describes your current living arrangements?

Answer	Frequency	%
I live with my spouse/partner/significant other	305	80.1
I am the only person in my household	53	13.9
I live with other family, friends, or roommates	18	4.7
I live in my parents' home.	5	1.3
I have no place to live	0	0.0
Not answered	106	

Table 110. Is your current housing acceptable to you?

Answer	Frequency	%
Yes	361	95.0
No	19	5.0
Not answered	107	

Table 111. Do you own your home or residence?

Answer	Frequency	%
Yes	328	87.9
No	45	12.1
Not answered	114	

Table 112. If no, would you prefer to own your residence?

Answer	Frequency	%
Yes	29	60.4
No	19	39.6

Table 113. Do you think there is a lack of affordable housing in your community?

Answer	Frequency	%
Yes	263	60.4
No	107	39.6
Not answered	117	

Table 114. What are the top three needs related to housing in your community?

Statement	Frequency	%
Variety of affordable housing options	221	45.4
Higher quality rentals	123	25.3
Assistance with property repair and maintenance	108	22.2
Neighborhood improvement programs	99	20.3
Code enforcement (e.g. overgrown lawns, broken windows, trash, etc.)	89	18.3
Low-income housing assistance (Section 8)	82	16.8
Education about financing options for homeownership	75	15.4
Education about responsible homeownership	67	13.8
Senior housing	63	12.9
Other	14	2.9
Historic Preservation	0	0.0

Note: Percent based on total N (487). Each person may have selected more than one option. Totals will not equal 100%.

Table 115. What are the top three needs related to housing in your community? – Other Comments

Answer	Frequency
Affordable housing	2
Rural education	1
Less government	1
Building codes	1
Decrease urban sprawl	1
Decrease low income housing	1

Transportation

SUMMARY OF FINDINGS

Pottawatomie County is slightly above average for the state in terms of the number of cars residents can access; however, other indicators show issues related to traffic safety (i.e., seat belt use, traffic injury mortality) and commute time. Survey respondents indicate that transportation is not typically an impediment to daily life with just over four percent (4.2%) reporting issues in this area. The responses regarding top needs show concern about maintenance of roadways, ways to make the community more accessible to those who cannot or do not want to use private vehicles as well as the increasing problem of texting and driving. Key findings from the survey are:

- The majority of respondents have two or more cars, and over 90% typically drive a car alone to go to their most frequent destinations.
- Just over 4% reported issues with transportation interfering with their regular activities.

- The top five identified needs related to transportation are:
 1. Provide maintenance and improvements to existing facilities (intersection or interchange improvements, pavement of gravel roads, bridge repairs, etc.)
 2. Develop a pedestrian friendly transportation system to make areas more walkable (improve sidewalks, crosswalks, signals, etc.)
 3. Address texting and driving
 4. Expand and improve the bike route system (bike paths, bike lanes) to increase the number of people who bike as a form of transportation
 5. Improve public transit service

See Tables 116 through 122 for specific data related to transportation.

SECONDARY TRANSPORTATION DATA

Table 116. Selected secondary transportation data.

Mental Health	Pottawatomie County	Kansas	Source
Percent of adults who reported they do not always wear a seatbelt when they drive or ride in a car, 2013	17.5%	17%	BRFSS
Rate of age-adjusted traffic injury mortality (per 100,000 population), 2010-2012	19.3	14.8	Kansas Department of Health and Environment
Alcohol related driving deaths, 2008 - 2012	3	691	Robert Wood Johnson Foundation County Health Rankings
All vehicle accident deaths, 2008 - 2012	13	1,992	Robert Wood Johnson Foundation County Health Rankings
Percent having access to one or more vehicles, 2011-2013	97.9%	94.6%	US Census Bureau American Community Survey
Percent who drive more than 30 minutes to work per day (i.e., long commute), 2011	25.0%	20.0%	Robert Wood Johnson Foundation County Health Rankings

TRANSPORTATION SURVEY DATA

Table 117. How many operating vehicles (cars, trucks, vans, motorcycles) do you have in your household that are used for personal transportation?

Answer	Frequency	%
None	13	3.4
One	81	21.1
Two	149	38.9
Three	95	24.8
Four or more	45	11.7
Not answered	104	

Table 118. What method of transportation do you normally use to go to work, school, or your most frequent destination?

Statement	Frequency	%
Car/truck/van - drive alone	348	91.1
Carpool/Ride with others	21	5.5
Other	4	1.0
Public transportation	4	1.0
Walk	2	0.5
Bicycle	2	0.5
Motorcycle	1	0.3
Taxi	0	0.0
Specialized transportation (e.g. for people with disabilities)	0	0.0
Not answered	105	

Table 119. What method of transportation do you normally use to go to work, school, or your most frequent destination?

– Other Comments

Answer	Frequency
Company car	2
Family driver	1

Table 120. Do issues with transportation regularly prevent you from doing what you need to do?

Answer	Frequency	%
Yes	16	4.2
No	363	95.8
Not answered	108	

Table 121. What are the top three transportation-related needs in your community?

Statement	Frequency	%
Provide maintenance and improvements to existing facilities (intersection or interchange improvements, pavement of gravel roads, bridge repairs, etc.)	149	30.6
Develop a pedestrian friendly transportation system to make areas more walkable (improve sidewalks, crosswalks, signals, etc.)	127	26.1
Address texting and driving	121	24.8
Expand and improve the bike route system (bike paths, bike lanes) to increase the number of people who bike as a form of transportation	111	22.8
Improve public transit service	102	20.9
Increase specialized transportation services for people with disabilities and/or special needs	75	15.4
Widen existing roads	51	10.5
Improve driver education	38	7.8
Improve traffic signals	36	7.4
Build new roads	35	7.2
Other	25	5.1
Expand local taxi services	21	4.3
Increase options for overnight public parking	13	2.7

Note: Percent based on total N (487). Each person may have selected more than one option. Totals will not equal 100%.

Table 122. What are the top three needs related to transportation in your community? – Other Comments

Answer	Frequency
Improve sidewalks/pedestrian walkways	4
Turn lanes	2
Public transportation	2
Road maintenance	2
Extend Marlatt	2
Improve parking	2
Responsible car owners	1
Transportation for the disabled	1
Drinking and driving	1
Increase traffic law enforcement	1
Paving gravel roads	1
Improve driver education	1

Infrastructure

SUMMARY OF FINDINGS

Secondary data related to indicators that make a community livable and sustainable show that Pottawatomie County does well in some areas and has deficits in others. Pottawatomie County experiences a low level of pollution and few severe housing problems, but has a significant lack of access to healthcare and mental health professionals. Additionally, the secondary data indicate an issue with access to healthy food and exercise opportunities across the community. Responses to the survey echo the secondary data with participants rating essential services (i.e., fire, emergency services, library) and environment highly. As has been noted in previous sections, the areas of concern are focused on options for navigating the community, housing, and roads maintenance. The specific key findings from the survey are:

- Respondents were asked to rate the public services/features on a scale from very poor to very good. The services/features that were rated highest are:
 1. Fire department
 2. Air quality
 3. Clean environment
 4. Emergency services
 5. Library facilities
- The lowest rated service/feature was paths/safe options for biking and walking; however, this feature still had a mean rating of “fair.”

See Tables 123 through 124 for specific data related to infrastructure.

SECONDARY INFRASTRUCTURE DATA

Table 123. Selected secondary infrastructure data.

Infrastructure	Pottawatomie County	Kansas	Source
Average daily amount of fine particulate matter (air pollutant) in micrograms per cubic meter (PM2.5), 2011	9.1	10.9	Robert Wood Johnson Foundation County Health Rankings
Ranking of lack of access to healthy food and food insecurity (i.e., food environment index) from 0 (worst) to 10 (best), 2013	8.5	7.5	Robert Wood Johnson Foundation County Health Rankings
Percent of individuals with access to exercise opportunities, 2014	50.0%	71.0%	Robert Wood Johnson Foundation County Health Rankings
Ratio of population to primary care physicians, 2014	1,827:1	1,380:1	Robert Wood Johnson Foundation County Health Rankings
Ratio of population to dentists, 2014	4,460:1	1,942:1	Robert Wood Johnson Foundation County Health Rankings
Ratio of population to mental health providers, 2014	11,151:1	861:1	Robert Wood Johnson Foundation County Health Rankings
Percent of population experiencing severe housing problems (i.e., lack of complete kitchen facilities, lack of complete plumbing, severely overcrowded, or severely cost overburdened), 2007 - 2011	11.0%	13.0%	Robert Wood Johnson Foundation County Health Rankings



INFRASTRUCTURE SURVEY DATA

Table 124. How would you rate the following public services/features in your community?

Statement	N	Very Poor	Poor	Fair	Good	Very Good	Mean
Fire department	367	0.3%	0.0%	11.4%	57.8%	30.5%	4.18
Air quality	367	0.8%	0.8%	8.7%	58.9%	30.8%	4.18
Clean environment	367	0.0%	0.8%	8.7%	61.9%	28.6%	4.18
Emergency services (e.g., ambulance, paramedics)	366	0.0%	1.1%	13.9%	55.2%	29.8%	4.14
Library facilities	362	1.1%	2.8%	11.9%	50.8%	33.4%	4.13
Maintenance of public grounds (e.g., parks, government buildings)	365	.30%	0.5%	13.4%	57.8%	27.9%	4.13
Trash pick-up	365	0.5%	1.6%	11.2%	60.0%	26.6%	4.10
Parks and recreation facilities	363	1.4%	3.3%	14.6%	49.3%	31.4%	4.06
Police or Sheriff's department	370	0.3%	3.0%	15.4%	55.1%	26.2%	4.04
Emergency preparedness (e.g., dealing with natural disasters, etc.)	360	0.3%	2.2%	22.5%	56.9%	18.1%	3.90
Internet access	361	1.7%	6.9%	20.5%	52.6%	18.3%	3.79
Handicapped accessibility of public facilities	358	1.1%	6.7%	27.7%	52.8%	11.7%	3.67
Quality of drinking water	372	4.6%	9.7%	21.5%	46.5%	17.7%	3.63
Animal Control	366	3.3%	6.0%	33.1%	49.2%	8.5%	3.54
Snow removal	366	3.6%	9.8%	27.9%	47.8%	10.9%	3.53
Crime prevention activities	348	2.3%	10.3%	38.8%	39.4%	9.2%	3.43
Road maintenance	370	2.7%	13.0%	31.6%	47.0%	5.7%	3.40
Code enforcement for private properties	340	3.8%	11.8%	34.7%	42.9%	6.8%	3.37
Paths/safe options for biking and walking	357	5.3%	17.9%	35.9%	34.7%	6.2%	3.18



Economics and Personal Finance

SUMMARY OF FINDINGS

The median household income and value of owner-occupied housing is higher than average for Pottawatomie County. Retail sales per capita are also higher than state average. In general, the secondary data show a community that is relatively prosperous, but may have pockets of individuals who struggle. Survey findings also indicate that a portion of the community experiences limited opportunities and resources. Key survey findings are:

- Although a relatively small number of respondents report not making enough to meet their expenses each month or having difficulty covering bills, over one-third (36.3%) report not earning enough to save money or plan for the future, and 13% have experienced a significant drop in income in the past year.
- Nearly 20% feel that their skills or education are not being fully used in their current jobs, and responses regarding the presence of a variety of jobs in the community are mixed.
- Over 50% indicated that they “disagree” or “strongly disagree” that there are enough well-paying jobs in the community.
- Responses were mixed related to the availability of opportunities to increase job skills with slightly more respondents agreeing that there are opportunities than disagree.

- Respondents were somewhat negative about property and sales taxes with a larger percentage indicating that they “disagree” or “strongly disagree” that sales and property taxes are reasonable as compared to those who “agree” or “strongly agree.”
- The goods or services that respondents were most likely to purchase in their community are banking, grooming/salon, and medical. The goods or services that were most likely to be purchased outside of the respondents’ communities are clothes, appliances, and electronics. For online purchases, clothes and electronics were at the top of the list.
- The top five economic/personal finance needs in the community are:
 1. Availability of jobs
 2. Employment for youth
 3. Small business development
 4. Emergency assistance to individuals or families (e.g., for utilities...
 5. Employment for older adults

See Tables 125 through 138 for specific data related to economics and personal finance.

SECONDARY ECONOMICS AND PERSONAL FINANCE DATA

Table 125. Selected secondary economics and personal finance data.

Economics/Personal Finance Data	Riley County	Kansas	Source
Median value of owner-occupied housing units, 2011-2013	\$152,900.00	\$129,500.00	US Census Bureau American Community Survey
Median household income, 2011-2013	\$55,758.00	\$50,808.00	US Census Bureau American Community Survey
Rate of unemployment, August 2014	5.4%	4.8%	US Bureau of Labor Statistics
Percent of persons (all ages) below federal poverty level, 2012	9.9%	14.0%	US Census Bureau Small Area Income and Poverty Estimates
Number of jobs per worker (20-70 years old), 2010	0.7*	0.8*	Flint Hills Regional Council
Percent of jobs with earnings over state average (\$50,000), 2010	25.0%*	42.0%*	Flint Hills Regional Council
Number of private nonfarm establishments, 2012	569	73,944	US Census Bureau State and County QuickFacts
Number employed at private nonfarm establishments, 2012	8,088	1,134,216	US Census Bureau State and County QuickFacts
Nonemployer establishments (small establishments with no more than one employee), 2012	1,628	188,168	US Census Bureau State and County QuickFacts
Amount of merchant wholesaler sales (in thousands), 2007	160,957	45,863,865	US Census Bureau State and County QuickFacts
Amount of retailer sales (in thousands), 2007	283,927	34,538,332	US Census Bureau State and County QuickFacts
Retail sales per capita, 2007	\$14,582.00	\$12,444.00	US Census Bureau State and County QuickFacts
Accommodation and food services sales (in thousands), 2007	11,780	4,192,347	US Census Bureau State and County QuickFacts
Number of building permits, 2012	143	6,252	US Census Bureau State and County QuickFacts

* Note: This data was only available in chart form without data labels (i.e., exact numbers). Therefore, the numbers presented are estimations based on the scale provided with each chart.

ECONOMICS AND PERSONAL FINANCE SURVEY DATA

Table 126. In a typical month, how difficult is it for you to cover your expenses and pay all your bills?

Answer	Frequency	%	Mean
Very Difficult	11	3.0	3.43
Difficult	55	14.8	
Neither Easy nor difficult	153	41.2	
Easy	86	23.2	
Very easy	66	17.8	
Not answered	116		

Table 127. Do you make enough money to save/plan for the future?

Answer	Frequency	%
Yes	232	63.7
No	132	36.3
Not answered	123	

Table 128. In the past 12 months, have you or your household experienced a large drop in income which you did not expect?

Answer	Frequency	%
Yes	49	13.1
No	326	86.9
Not answered	112	

Table 129. Do you make enough money to support yourself and/or family?

Answer	Frequency	%
Yes	322	87.5
No	46	12.5
Not answered	119	

Table 130. Do you feel like your skills and/or education are being fully used in your current job or in retirement?

Answer	Frequency	%
Yes	265	71.2
No	71	19.1
I don't have a job	36	9.7
Not answered	115	

Table 131. There are a variety of jobs available in my community.

Answer	Frequency	%	Mean
Strongly Disagree	32	8.8	
Disagree	109	30.1	
Neither Agree nor Disagree	102	28.2	2.89
Agree	104	28.7	
Strongly Agree	15	4.1	
Not answered	125		

Table 132. There are enough well-paying jobs in my community.

Answer	Frequency	%	Mean
Strongly Disagree	50	13.9	
Disagree	139	38.6	
Neither Agree nor Disagree	102	28.3	2.54
Agree	66	18.3	
Strongly Agree	3	0.8	
Not answered	127		

Table 133. There are opportunities for increasing my jobs skills.

Answer	Frequency	%	Mean
Strongly Disagree	18	5.1	
Disagree	84	23.8	
Neither Agree nor Disagree	97	27.5	3.14
Agree	137	38.8	
Strongly Agree	17	4.8	
Not answered	134		

Table 134. Property taxes in my community are reasonable.

Answer	Frequency	%	Mean
Strongly Disagree	28	7.6	
Disagree	113	30.8	
Neither Agree nor Disagree	95	25.9	2.91
Agree	125	34.1	
Strongly Agree	6	1.6	
Not answered	120		

Table 135. Sales taxes in my community are reasonable.

Answer	Frequency	%	Mean
Strongly Disagree	28	7.6	
Disagree	125	34.0	
Neither Agree nor Disagree	108	29.3	2.82
Agree	104	28.3	
Strongly Agree	3	0.8	
Not answered	119		

Table 136. Where do you most often purchase the following goods or services? Check all that apply.

Statement	% In My Community	% Outside My Community	% Online	% N/A
Groceries	39.4	44.8	0.6	0.2
Clothes	20.1	53.0	13.1	0.4
General household supplies	38.2	42.9	1.0	0.2
Banking services	56.9	19.7	4.5	0.2
Pet supplies	25.1	30.8	2.1	15.2
Legal services	24.8	27.1	0.2	21.4
Insurance	35.9	37.0	4.3	0.4
Medical	51.7	28.5	0.6	0.4
Dental	47.8	26.7	0.6	1.4
Car/Truck purchase	27.1	47.4	0.8	2.5
Office/School supplies	27.5	42.1	2.3	4.3
Grooming and salon service	53.0	22.6	0.4	2.3
Tools and Hardware	42.9	36.8	1.4	1.4
Appliances	23.2	49.9	1.8	2.3
Electronics	19.7	49.9	10.3	1.6
Restaurant/Entertainment	43.9	47.0	0.8	0.6
Arts	26.1	36.1	0.8	11.7

Note: Percent based on total N (487). Each person may have selected more than one option. Totals will not equal 100%.

Table 137. What are the top three economic/personal finance needs in your community?

Statement	Frequency	%
Availability of jobs	159	32.6
Employment opportunities for youth	110	22.6
Small business development	96	19.7
Emergency assistance to individuals or families (e.g., for utilities, food, rent, etc.)	80	16.4
Employment opportunities for older adults	75	15.4
Assistance with searching for and gaining employment	69	14.2
Low-cost resources to help with personal finance management	64	13.1
Availability of college or career preparation in schools	55	11.3
Availability of low-interest loans	52	10.7
Access to education	36	7.4
Other	15	3.1
Workforce development training	4	0.8

Note: Percent based on total N (487). Each person may have selected more than one option. Totals will not equal 100%.

Table 138. What are the top three economic/personal finance needs in your community?

– Other Comments

Answer	Frequency
Financial education	2
Affordable education	1
Higher paying jobs	1
More jobs that require degrees earned	1
Grocery store	1

Appendix A: Riley County and Pottawatomie County Community Needs Assessment Survey

The following survey was used for online, hard copy, and phone administration. The survey was translated into Spanish and Korean. The consent form was also translated and used for all versions except for the phone survey, for which a shortened statement was used. The sections included in this Appendix are those for which data is provided in the previous report (i.e., Quality of Life, Physical Health (including physical activity, nutrition, and tobacco use/smoking), Mental Health, Social Issues, Children and Youth, Education, Aging, Housing, Transportation, Infrastructure, and Economics and Personal Finance, and Demographics).

Riley/Pottawatomie County Community Needs Assessment Consent Form

Purpose

You are invited to take part in a survey about the quality of life in Riley and Pottawatomie Counties that includes questions about your experiences and opinions about your community. The information from this survey will be used to help organizations in Riley and Pottawatomie Counties better understand what residents think about the community and the needs that are present in communities in this area.

Participant Selection

You are being asked to participate in this survey because you are a resident of Riley or Pottawatomie Counties. Anyone over the age of 18 is invited to complete this survey. It is expected that approximately 850 people will take this survey.

Explanation of Procedures

If you decide to participate, you can take the survey after reading and agreeing to this consent statement. The survey contains questions about you (e.g., your age, your zip code, whether you've had certain experiences such as substance abuse within your household, etc.), but will mainly focus on what you think about your community. A few questions may seem sensitive (i.e., how would you describe your overall mental health on a scale of poor to excellent), but the information will only be used to gain an idea of how many people in the community deal with common issues. The survey is broken into sections focusing on various issues that may affect your community. The survey will take approximately 30 minutes

to complete. You are asked to answer as many questions as possible, but you can skip questions that make you uncomfortable, aren't applicable to you, or if you don't know the answer. This survey is anonymous, so we do not need your name or any other identifying information. Once you complete this survey, your answers will be combined with those of all other participants, and a report on the results will be provided to Riley County Seniors' Service Center prepared by Wichita State University's Center for Community Support and Research staff. Riley County Seniors' Service Center will publish the report for the use of communities in Riley and Pottawatomie Counties. If you prefer to take the survey online, you can go to www.Riley-PottSurvey.com.

Discomfort/Risks

You may feel uncomfortable with some of the questions that ask about whether you or anyone in your household has experience with certain social issues (e.g., substance abuse, domestic violence, etc.). This survey is completely anonymous, so no one will be able to connect your name with your answers. Also, if you feel uncomfortable with a question, you may skip it.

Benefits

The benefit of participating in this survey is an opportunity to provide input regarding what people in the community experience, what they think of their community now, and what they think may need to

change for the future. This will help your community plan and take action on issues that affect residents.

Confidentiality

This survey is anonymous and does not ask you to provide your name or other identifying information. All of your responses will be combined with those of others so that we can compile a report on general opinions and experiences without reporting any individual answers. The report on the combined responses will be provided to Riley County Seniors' Service Center to distribute for use in Riley and Pottawatomie Counties.

Refusal/Withdrawal

Participation in this survey is entirely voluntary. You can choose to skip questions or stop taking the survey at any time. Your decision on whether or not to participate will not affect your relationship with Wichita State University and/or Riley County Seniors' Service Center. If you agree to participate in this study, you are free to quit the survey at any time without penalty.

Contact

If you have any questions about this research, you can contact me at: Dr. Tara Gregory, 316-978-3714 or tara.gregory@wichita.edu. If you have questions pertaining to your rights as a research subject, or about research-related injury, you can contact the Office of Research and Technology Transfer at Wichita State University, Wichita, KS 67260-0007, telephone 316-978-3285.

You are under no obligation to participate in this survey. By checking "agree" on the next page, this indicates that you have read the information above and have voluntarily decided to participate

Please detach this consent form and keep it for your records.

The survey starts on the next page.

.....

Thank you for your interest in taking this Riley County/Pottawatomie County Community Needs Assessment survey. The purpose of this survey is 1) to get your input on the quality of life in your community and 2) to identify the unmet needs in your community. Some of the questions ask you about your personal experiences. Some ask about your opinions on the community. We do not need your name or any identifying information, so please feel free to be completely honest. Anyone who lives in Riley or Pottawatomie Counties is invited to take this survey. We expect at least 850 people to take this survey. We encourage you to answer as many questions as possible. This survey will take about 30 minutes to complete. This survey is also available online at www.Riley-PottSurvey.com. If you are using a public computer, you need to complete the survey all at once. If you are using a personal computer, you may stop taking the survey at any point and come back to it later. You just need to complete the survey within 2 weeks. The survey will close on May 26, 2014. Please take the survey only once.

You are under no obligation to participate in this survey. By checking "I agree" below, it indicates that you have read the consent and have voluntarily decided to participate.

I agree

What county do you currently live in?

Riley

Pottawatomie

Do you consider this county to be your permanent residence?

Yes

No

What city is listed on your address?

What is your zip code?

- 66411 66506 66535
- 66449 66517 66547
- 66502 66520 66554
- 66503 66521 66962
- 66505 66531 67487

What is your age?

- Under 18 years 50 to 64 years
- 18 to 24 years 65 to 74 years
- 25 to 34 years 75 years and over
- 35 to 49 years

Other

In the following sections, most of the questions ask about “your community” or “the community.” “Community” in this survey means the area around which you live. For most people, this will be their city or town. For those who live in rural areas, this may include the town where they get services. Also, some of the questions ask about “needs” in the community. When you answer questions about “needs,” think about those things that are either completely lacking or should be improved in order to increase the quality of life in your community.

QUALITY OF LIFE

Please rate the following statements about the quality of life in your community based on your experiences.

	Strongly Disagree	Disagree	Neither Agree Nor Disagree	Agree	Strongly Agree
I am satisfied with the quality of life in this community.	1	2	3	4	5
I am satisfied with the healthcare system in this community.	1	2	3	4	5
I am satisfied with the local schools.	1	2	3	4	5
I am satisfied with local government.	1	2	3	4	5
This is a good place to raise children.	1	2	3	4	5
This is a good place to retire.	1	2	3	4	5
This is a safe place to live.	1	2	3	4	5
This is a beautiful place to live.	1	2	3	4	5
There is economic opportunity in this community.	1	2	3	4	5
There are networks of support for individuals and families during times of stress and need.	1	2	3	4	5
There is an active sense of civic responsibility, engagement, and pride in shared accomplishments.	1	2	3	4	5
There are plenty of recreational activities for my family and me.	1	2	3	4	5
There are opportunities to volunteer in my community.	1	2	3	4	5
All individuals and groups have the opportunity to contribute to and participate in the community's quality of life.	1	2	3	4	5
All residents think that they can make the community a better place to live.	1	2	3	4	5
The community is strengthened by its diversity.	1	2	3	4	5

What are the three most important factors that contribute to a high quality of life in this community?

- Access to affordable health insurance
- Affordable housing
- Arts and cultural events
- Availability of healthcare
- Career enhancement
- Clean environment (including water, air, sewage, waste disposal)
- Equality
- Good place to raise children
- Good schools
- Healthy behaviors and lifestyles
- Healthy economy
- Jobs with adequate wages
- Low crime
- Low disease rates
- Low level of child abuse
- Parks and recreation
- Religious or spiritual values
- Resources for parents
- Safe neighborhoods
- Strong family life
- Other

HEALTH INFORMATION

How do you get most of your health-related information? Check all that apply.

- Books/magazines
- Church
- Doctor/nurse
- Friends and family
- Health department
- Help lines
- Hospital
- Internet
- My child's school
- Pharmacist
- Other

Personal Health

How would you describe your overall health?

Poor	Fair	Good	Very Good	Excellent	Not Sure
1	2	3	4	5	0

Has a health professional ever diagnosed you with one of the following? Check all that apply.

- Alzheimer's/Dementia
- Cancer
- Chronic Lung Disease
- High Cholesterol
- Diabetes
- Heart Disease
- High Blood Pressure
- Any Mental Health Diagnosis

If so, what was your diagnosis:

Do you have health insurance?

- Yes
- No

Do you consult a professional when you are sick?

- Yes
- No

If yes, where do you go most often when you are sick?

- My doctor's office
- Medical clinic
- Health department
- Urgent care center
- Hospital Emergency Room
- Free Clinic (e.g. Safety Net
- Clinic, Clinics that don't require health insurance, etc.)
- Other:

In the last 12 months, have you received a flu shot or nasal spray?

- Yes
- No

I can access the healthcare I need in this community.

Strongly Disagree	Disagree	Neither Agree Nor Disagree	Agree	Strongly Agree
1	2	3	4	5

Physical Activity

During a normal week, other than in your regular job, how many hours per week do you engage in any physical activity or exercise?

- None
- Less than 1 hour
- 1-2 hours
- 2-3 hours
- 3 hours or more

If you exercise, where do you go to exercise or engage in physical activity? Check all that apply.

- Home
- Neighborhoods
- Park
- Private gym/studio
- Public Recreation
- Center
- Schools
- Other

If you don't exercise, what are the reasons you do not exercise? Select up to three.

- My job is physical or hard labor
- Exercise is not important to me.
- I don't have access to a facility that has the things I need, like a pool, golf course, or a track.
- I don't have enough time to exercise.
- I would need child care and I don't have it.
- I don't know how to find exercise partners.
- I don't like to exercise.
- It costs too much to exercise.
- There is no safe place.
- Other:

There are enough options for physical activity in this community.

Strongly Disagree	Disagree	Neither Agree Nor Disagree	Agree	Strongly Agree
1	2	3	4	5

This community values physical activity.

Strongly Disagree	Disagree	Neither Agree Nor Disagree	Agree	Strongly Agree
1	2	3	4	5

Nutrition

Overall, I eat healthy foods.

Strongly Disagree	Disagree	Neither Agree Nor Disagree	Agree	Strongly Agree
1	2	3	4	5

In a typical day, how many times do you eat fruit and/or vegetables?

- None
- Once
- Twice
- Three times
- Four or more times

If you don't eat enough fruits and vegetables (2 cups of each) on a typical day, what are the reasons you do not? Select up to three.

Not applicable; I eat enough fruits and vegetables.

- I'm not able to get to a grocery store
- It costs too much.
- I don't have enough time to purchase and prepare them.
- I don't know how to cook them.
- I don't like all or some of the healthy foods.
- Others in my household don't like all or some of them.
- I have dietary restrictions due a medical condition.
- I have dietary restrictions due to religious beliefs/customs.
- Other

This community values healthy eating.

Strongly Disagree	Disagree	Neither Agree Nor Disagree	Agree	Strongly Agree
1	2	3	4	5

I can access the healthy food I need in this community.

Strongly Disagree	Disagree	Neither Agree Nor Disagree	Agree	Strongly Agree
1	2	3	4	5

Are you often concerned about having enough food for you and/or your family to eat?

- Yes
- No

Smoking/Tobacco

Do you currently smoke/use tobacco products?

- Yes
- No

If yes, where would you go for help if you wanted to quit?

- Not applicable; I don't want to quit
- Church
- Doctor
- Health Department
- KS Quitline
- Pharmacy
- Private counselor/therapist
- I don't know
- Other



Overall Health Needs

What are the top three needs related to physical health in your community?

- Access to healthy food options
- Affordable health insurance
- Affordable health services
- Affordable prescriptions
- Availability of transportation for health services
- Children health services
- Dental care options
- Facilities for physical activity (including parks, trails, rec centers)
- Healthcare assistance for older adults
- Healthcare assistance for veterans/military
- Increased health education/prevention (e.g., healthy eating, disease prevention, etc.)

- Increased number of healthcare providers
- Maternal health services
- Prevention of infant mortality
- Substance abuse prevention/treatment
- Tobacco use cessation (quitting) services
- Other

MENTAL HEALTH

How would you describe your overall mental health?

Poor	Fair	Good	Very Good	Excellent	Not Sure
1	2	3	4	5	0

Do you consult a mental health professional when your mental health is not good?

- Yes
- No
- My mental health is always good.

If yes, where do you go most often when your mental health is not good?

- Community mental health center
- Fort Riley
- Hospital emergency room
- Private practice
- Other

This community has adequate mental health services for people who need them.

Strongly Disagree	Disagree	Neither Agree Nor Disagree	Agree	Strongly Agree
1	2	3	4	5

Overall Mental Health Needs

What are the top three needs related to mental health in your community?

Affordable health insurance that includes mental healthcare

- Affordable mental health services
- Affordable prescriptions
- Availability of transportation for mental health services
- Children mental health services
- High quality mental health services
- Increased mental health education/prevention
- Increased number of mental healthcare providers
- Substance abuse prevention/treatment
- Other

SOCIAL ISSUES

Do you or anyone in your household have a substance use issue (e.g., drink too much alcohol, have a problem with legal or illegal drugs)?

- Yes
 No

Do you or anyone in your household currently experience domestic violence (e.g., violence between adult partners)?

- Yes
 No

Excluding mental illness, do you or anyone in your household have a physical or developmental disability?

- Yes
 No

Are you or anyone in your immediate family currently homeless (e.g., no permanent place to live on a daily basis)?

- Yes
 No

Have you personally experienced or witnessed discrimination in this community based on any of the following? Check all that apply. Also, please check if the discrimination occurred in one of the settings listed below (i.e. housing, public accommodation, education).

Discrimination based on:	Setting		
	In Housing	In Public Accommodation (e.g., retail stores, service establishments, educational institutions, recreation facilities, etc.)	In Employment
Race			
Religion			
Ethnicity			
Sexual Orientation			
Age			
Gender			
Gender Identity			
Disability			

Please choose the top three social issues that are of most concern in your community:

- | | | | | |
|--|---|--|--|--|
| <input type="checkbox"/> Adult drug or alcohol use | <input type="checkbox"/> Discrimination | <input type="checkbox"/> Hunger | <input type="checkbox"/> Property crime | <input type="checkbox"/> Youth drug or alcohol use |
| <input type="checkbox"/> Child physical or sexual abuse | <input type="checkbox"/> Domestic violence | <input type="checkbox"/> Inattentive driving | <input type="checkbox"/> Suicide | <input type="checkbox"/> Youth/gang violence |
| <input type="checkbox"/> Cybercrime (including identity theft, online scams, phishing, etc.) | <input type="checkbox"/> Drinking and driving | <input type="checkbox"/> Manufacture or selling of drugs | <input type="checkbox"/> Teen pregnancy | <input type="checkbox"/> Other |
| | <input type="checkbox"/> Elder abuse | <input type="checkbox"/> Mental illness | <input type="checkbox"/> Violent crime (including assault, rape, murder) | <input type="text"/> |
| | <input type="checkbox"/> Homelessness | <input type="checkbox"/> Poverty | | |

What are the top three needs related to social issues in your community?

- Affordable legal services
- Availability of employment
- Availability of mental health services
- Availability of services for people with low incomes
- Availability of support groups/peer support
- Better enforcement of laws
- Changing local laws
- Child care
- Housing options for homeless persons
- Options for arts and entertainment activities
- Positive activities for youth
- Services for domestic/sexual violence survivors
- Services for older adults
- Services for persons with disabilities
- Services to veterans/military
- Substance abuse prevention or treatment
- Other

CHILDREN AND YOUTH

Are you a parent or custodial grandparent/guardian of someone under 18?

- Yes
- No

**If yes:
Are you a single parent?**

- Yes
- No

Do any of your children have a developmental disability?

- Yes
- No

Do any of your children have a physical disability?

- Yes
- No

Do any of your children have a chronic disease?

- Yes
- No

Have any of your children been diagnosed with a mental illness or emotional disturbance?

- Yes
- No

Are you satisfied with the education your children are receiving?

- Yes
- No

Are your children home-schooled?

- Yes
- No

Have any of your children been afraid to attend school/other activities due to bullying?

- Yes
- No

Are you satisfied with non-school activities for children in your community?

- Yes
- No

Have you ever quit or lost a job because you did not have the childcare you needed?

- Yes
- No

Do you use childcare for your children?

- Yes
- No

If yes, what type of childcare do you use? Check all that apply.

- Licensed Day Care Home
- Group Day Care Home
- Child Care Center
- Preschool
- Afterschool/Latchkey Program
- Relative or Friend
- Other

If yes, Are you satisfied with the quality of the childcare you currently receive?

- Yes
- No

Are you satisfied with the childcare options that are available to you?

- Yes
- No

Do you receive any type of childcare assistance?

- Yes
- No

Is your childcare affordable?

- Yes
- No

In your opinion, how well does your community generally meet the needs of children and/or adolescents in the following areas?

	Very Poor	Poor	Fair	Good	Excellent	
Prenatal Care (pregnancy)	1	2	3	4	5	Don't Know
Postnatal Care (birth through first year)	1	2	3	4	5	Don't Know
Access to Childcare for Children 0-5	1	2	3	4	5	Don't Know
Quality of Childcare for Children 0-5	1	2	3	4	5	Don't Know
Parental Support/Training	1	2	3	4	5	Don't Know
Support for Single Parents	1	2	3	4	5	Don't Know
Quality Education	1	2	3	4	5	Don't Know
College or Career Preparation	1	2	3	4	5	Don't Know
Needs of Children/Youth with Disabilities	1	2	3	4	5	Don't Know
Dental Health	1	2	3	4	5	Don't Know
Mental Health	1	2	3	4	5	Don't Know
Physical Health	1	2	3	4	5	Don't Know
Violence/Bullying Prevention	1	2	3	4	5	Don't Know
Recreational Opportunities	1	2	3	4	5	Don't Know
Volunteer Opportunities	1	2	3	4	5	Don't Know
Needs of Mothers Whose First Language Isn't English	1	2	3	4	5	Don't Know
Needs of Children Whose First Language Isn't English	1	2	3	4	5	Don't Know
Basic Needs of Low-Income Children/Youth	1	2	3	4	5	Don't Know
Employment for Youth	1	2	3	4	5	Don't Know

What are the top three needs related to children (0-12) in your community?

- | | | | | |
|---|---|--|---|--|
| <input type="checkbox"/> Afterschool programs | <input type="checkbox"/> Early childhood intervention programs (e.g., Head Start, etc.) | <input type="checkbox"/> Medical care | <input type="checkbox"/> Parenting education/skills development | <input type="checkbox"/> Services for children with physical or developmental disabilities |
| <input type="checkbox"/> Bullying prevention | <input type="checkbox"/> Financial assistance to families (for nutrition, childcare, housing, etc.) | <input type="checkbox"/> Mental healthcare | <input type="checkbox"/> Public education | <input type="checkbox"/> Transportation |
| <input type="checkbox"/> Childcare for children 0-5 | | <input type="checkbox"/> Mentoring programs for children | <input type="checkbox"/> Recreational activities | <input type="checkbox"/> Other |
| <input type="checkbox"/> Dental care | | <input type="checkbox"/> Nutrition programs (e.g. WIC, free and reduced lunch, etc.) | | <input type="text"/> |

What are the top three needs related to adolescents (13-18) in your community?

- | | | |
|--|--|--|
| <input type="checkbox"/> Access to higher education | <input type="checkbox"/> Medical care | <input type="checkbox"/> Recreational activities |
| <input type="checkbox"/> Access to technology/
computers | <input type="checkbox"/> Mental healthcare | <input type="checkbox"/> Services for children with
physical or developmental
disabilities |
| <input type="checkbox"/> Appropriate internet/
technology use (e.g., sexting,
cyberbullying, etc.) | <input type="checkbox"/> Mentoring programs for
adolescents | <input type="checkbox"/> Substance abuse
prevention/treatment |
| <input type="checkbox"/> Bullying/relationship violence
prevention | <input type="checkbox"/> Obesity prevention | <input type="checkbox"/> Teen pregnancy prevention/
Sex education |
| <input type="checkbox"/> Cultural enrichment
opportunities | <input type="checkbox"/> Parenting education/skills
development (for parents
of adolescents) | <input type="checkbox"/> Transportation |
| <input type="checkbox"/> Dental care | <input type="checkbox"/> Opportunities to contribute
to the community (e.g.,
volunteering, leadership
development, participation in
community decision-making) | <input type="checkbox"/> Tutoring |
| <input type="checkbox"/> Employment opportunities
for teens | <input type="checkbox"/> Public education | <input type="checkbox"/> Workforce training for teens |
| <input type="checkbox"/> Financial skills training | | <input type="checkbox"/> Other |
-

EDUCATION

How would you rate K-12 education in your community in the following areas?

	Very Poor	Poor	Fair	Good	Excellent	
The quality of the school your child attends.	1	2	3	4	5	N/A
The overall quality of schools.	1	2	3	4	5	Don't Know
The quality of teachers.	1	2	3	4	5	Don't Know
The amount of parental involvement in the child's education.	1	2	3	4	5	Don't Know
The availability of support resources at the school (counselors, tutors, etc.).	1	2	3	4	5	Don't Know
The availability of up-to-date technology for students to use.	1	2	3	4	5	Don't Know
The availability of extracurricular programs, clubs, or sports.	1	2	3	4	5	Don't Know
The amount of money a school spends per student.	1	2	3	4	5	Don't Know
The quality of school buildings.	1	2	3	4	5	Don't Know
The quality of curriculum.	1	2	3	4	5	Don't Know
Availability of afterschool programs.	1	2	3	4	5	Don't Know

What are the top three needs regarding education in your community?

- | | |
|--|--|
| <input type="checkbox"/> Addressing bullying | <input type="checkbox"/> Increased quality of curriculum |
| <input type="checkbox"/> Addressing fighting, violence, and/or gangs | <input type="checkbox"/> Increased quality of instruction by teachers |
| <input type="checkbox"/> Addressing overcrowding in schools | <input type="checkbox"/> Increased student discipline |
| <input type="checkbox"/> Addressing the condition of school buildings | <input type="checkbox"/> More artistic and musical activities |
| <input type="checkbox"/> Availability of physical activities and sports | <input type="checkbox"/> More extracurricular activities |
| <input type="checkbox"/> Availability of quality computers and technology | <input type="checkbox"/> More involvement of students in decision-making |
| <input type="checkbox"/> Equality in funding among school districts | <input type="checkbox"/> Raising standardized test scores |
| <input type="checkbox"/> Getting and keeping good teachers | <input type="checkbox"/> Updated textbooks |
| <input type="checkbox"/> Increased amount of time students spend in school | <input type="checkbox"/> Other |
| <input type="checkbox"/> Increased expectations for student achievement | |
| <input type="checkbox"/> Increased parental involvement | |

AGING

This community is supportive of healthy aging.

Strongly Disagree	Disagree	Neither Agree Nor Disagree	Agree	Strongly Agree
1	2	3	4	5

The necessary senior services are available in this community.

Strongly Disagree	Disagree	Neither Agree Nor Disagree	Agree	Strongly Agree
1	2	3	4	5

Choose the top three needs for older adults in your community?

- | | | |
|---|--|---|
| <input type="checkbox"/> Access to daily meals | <input type="checkbox"/> Elder abuse | <input type="checkbox"/> Legal services |
| <input type="checkbox"/> Affordable housing | <input type="checkbox"/> Employment | <input type="checkbox"/> Long term care options |
| <input type="checkbox"/> Affordable prescriptions | <input type="checkbox"/> Finances/Income
Health insurance | <input type="checkbox"/> Medical care |
| <input type="checkbox"/> Assisted living options | <input type="checkbox"/> Home healthcare options | <input type="checkbox"/> Memory care options/
dementia support |
| <input type="checkbox"/> Caregiver support | <input type="checkbox"/> Hospice | <input type="checkbox"/> Mental health services |
| <input type="checkbox"/> Day programs | <input type="checkbox"/> Independent living in a
retirement community | <input type="checkbox"/> Personal care services |
| <input type="checkbox"/> Dental care | <input type="checkbox"/> Independent living in the home | <input type="checkbox"/> Respite services for caregivers |
| <input type="checkbox"/> Ease of mobility in
the community | | |

Are you a caregiver for an older adult (spouse, parent, etc.)?

- Yes
 No

If yes, are you receiving the services you need?

- Yes
 No

If no, what services do you need?

Choose the top three needs for older adults in your community? (CONTINUED)

- Safety
 Transportation
 Vision care
 Substance abuse
 Utility assistance
 Other

Are you 60 years old or older?

- Yes
 No

If yes, how important are the following in your life right now?

	Not Important	Somewhat Important	Moderately Important	Important	Very
Staying mentally sharp	1	2	3	4	5
Spending time with family and friends	1	2	3	4	5
Learning new things	1	2	3	4	5
Receive or continue to receive Social Security benefits	1	2	3	4	5
Receive or continue to receive Medicare benefits	1	2	3	4	5
Having enough money to meet daily living expenses	1	2	3	4	5
Having adequate health insurance coverage	1	2	3	4	5
Affording the cost of out-of-pocket healthcare expenses and prescription drugs	1	2	3	4	5
Having quality long-term care for yourself or a family member	1	2	3	4	5
Staying healthy	1	2	3	4	5
Being able to stay in your own home	1	2	3	4	5
Protecting yourself from consumer fraud	1	2	3	4	5
Saving money for everyday expenses like groceries, gasoline, and dining out	1	2	3	4	5
Having enough money to live comfortably and do the things you want to do	1	2	3	4	5
Having access to public transportation	1	2	3	4	5
Enforcement of quality standards for nursing homes	1	2	3	4	5
Being able to volunteer in my community	1	2	3	4	5
Being able to use my cell phone with confidence	1	2	3	4	5
Being able to go online to use email and manage my finances with confidence	1	2	3	4	5

HOUSING

Which of the following best describes your current living arrangements?

- I am the only person in the household.
 I live with other family, friends, or roommates.
 I live with my spouse/partner/significant other.
 I have no place to live.
 I live in my parents' home.

Is your current housing acceptable to you?

- Yes
- No

Do you own your home or residence?

- Yes
- No

If no, would you prefer to own your residence?

- Yes
- No

Do you think there is a lack of affordable housing in your community?

- Yes
- No

What are the top three needs related to housing in your community?

- Assistance with property repair and maintenance
- Code enforcement (e.g. overgrown lawns, broken windows, trash, etc.)
- Education about financing options for homeownership
- Education about responsible homeownership
- Higher quality rentals
- Historic preservation
- Low-income housing assistance (Section 8)
- Neighborhood improvement programs
- Senior housing
- Variety of affordable housing options
- Other

TRANSPORTATION

How many operating vehicles (cars, trucks, vans, motorcycles) do you have in your household that are used for personal transportation?

- None
- One
- Two
- Three
- Four or more

What method of transportation do you normally use to go to work, school, or your most frequent destination?

- Car/truck/van - drive alone
- Carpool/Ride with others
- Motorcycle
- Bicycle
- Walk
- Public transportation
- Taxi
- Specialized transportation (e.g. for people with disabilities)
- Other

Do issues with transportation regularly prevent you from doing what you need to do?

- Yes
- No

What are the top three transportation-related needs in your community?

- Address texting and driving
- Build new roads
- Develop a pedestrian friendly transportation system to make areas more walkable (improve sidewalks, crosswalks, signals, etc.)
- Expand and improve the bike route system (bike paths, bike lanes) to increase the number of people who bike as a form of transportation
- Expand local taxi services
- Improve driver education
- Other
- Improve public transit service
- Improve traffic signals
- Increase options for overnight public parking
- Increase specialized transportation services for people with disabilities and/or special needs
- Provide maintenance and improvements to existing facilities (intersection or interchange improvements, pavement of gravel roads, bridge repairs, etc.)
- Widen existing roads

INFRASTRUCTURE

How would you rate the following public services in your community?

	Very Poor	Poor	Fair	Good	Excellent	
Animal control	1	2	3	4	5	N/A
Emergency preparedness (e.g., dealing with natural disasters, etc.)	1	2	3	4	5	N/A
Emergency services (e.g., ambulance, paramedics)	1	2	3	4	5	N/A
Fire department	1	2	3	4	5	N/A
Police or Sheriff's department	1	2	3	4	5	N/A
Road maintenance	1	2	3	4	5	N/A
Trash pick-up	1	2	3	4	5	N/A
Quality of drinking water	1	2	3	4	5	N/A
Snow removal	1	2	3	4	5	N/A
Maintenance of public grounds (e.g., parks, government buildings)	1	2	3	4	5	N/A
Air quality	1	2	3	4	5	N/A
Clean environment	1	2	3	4	5	N/A
Library facilities	1	2	3	4	5	N/A
Parks and recreation facilities	1	2	3	4	5	N/A
Code enforcement for private properties	1	2	3	4	5	N/A
Paths/safe options for biking and walking	1	2	3	4	5	N/A
Crime prevention activities	1	2	3	4	5	N/A
Handicapped accessibility of public facilities	1	2	3	4	5	N/A
Internet access	1	2	3	4	5	N/A

ECONOMICS AND PERSONAL FINANCE

In a typical month, how difficult is it for you to cover your expenses and pay all your bills?

Very Difficult	Difficult	Neither Easy Nor Difficult	Easy	Very Easy
1	2	3	4	5

Do you make enough money to save/plan for the future?

- Yes
 No

In the past 12 months, have you or your household experienced a large drop in income which you did not expect?

- Yes
 No

Do you make enough money to support yourself and/or family?

- Yes
 No

Do you feel like your skills and/or education are being fully used in your current job or in retirement?

- Yes
 No
 I don't have a job

There are a variety of jobs available in my community.

Strongly Disagree	Disagree	Neither Agree Nor Disagree	Agree	Strongly Agree
1	2	3	4	5

There are enough well-paying jobs in my community.

Strongly Disagree	Disagree	Neither Agree Nor Disagree	Agree	Strongly Agree
1	2	3	4	5

There are opportunities for increasing my job skills.

Strongly Disagree	Disagree	Neither Agree Nor Disagree	Agree	Strongly Agree
1	2	3	4	5

Property taxes in my community are reasonable.

Strongly Disagree	Disagree	Neither Agree Nor Disagree	Agree	Strongly Agree
1	2	3	4	5

Sales taxes in my community are reasonable.

Strongly Disagree	Disagree	Neither Agree Nor Disagree	Agree	Strongly Agree
1	2	3	4	5

Where do you most often purchase the following goods or services? Check all that apply.

	In My Community	Outside My Community	Online	N/A
Groceries				
Clothes				
General household supplies				
Banking services				
Pet supplies				
Legal services				
Insurance				
Medical				
Dental				
Car/Truck purchase				
Office/School supplies				
Grooming and salon service				
Tools and Hardware				
Appliances				
Electronics				
Restaurant/Entertainment				
Arts				

What are the top three economic/personal finance needs in your community?

- | | |
|--|--|
| <input type="checkbox"/> Access to education | <input type="checkbox"/> Employment opportunities for older adults |
| <input type="checkbox"/> Assistance with searching for and gaining employment | <input type="checkbox"/> Employment opportunities for youth |
| <input type="checkbox"/> Availability of college or career preparation in schools | <input type="checkbox"/> Low-cost resources to help with personal finance management |
| <input type="checkbox"/> Availability of jobs | <input type="checkbox"/> Small business development |
| <input type="checkbox"/> Availability of low-interest loans | <input type="checkbox"/> Workforce development training |
| <input type="checkbox"/> Emergency assistance to individuals or families (e.g., for utilities, food, rent, etc.) | <input type="checkbox"/> Other |

DEMOGRAPHIC INFORMATION

Gender:

- Male
- Female
- Other (please specify)

Racial Categories (Check one):

- White
- Asian
- African American/Black
- American Indian or Alaska Native
- Native Hawaiian or Pacific Islander
- Multiracial
- Other (please specify)

Ethnic Category (Check one):

- Hispanic or Latino
- Not Hispanic or Latino

What is the highest level of school, college or vocational training that you have finished?

- Less than 9th grade
- 9-12th grade, no diploma
- High school graduate (or GED/equivalent)
- Associate's degree or vocational training
- Some college (no degree)
- Bachelor's degree
- Graduate or professional degree

What best describes your current marital status?

Single, never married

- Married
- Divorced
- Widowed
- Not married, but living together
- Domestic partnership or civil union

What was your total household income last year, before taxes?

- Less than \$10,000
- \$10,000 to \$14,999
- 15,000 to \$24,999
- \$25,000 to \$34,999
- \$35,000 to \$49,999
- \$50,000 to \$74,999
- \$75,000 to \$99,999
- \$100,000 to \$199,999
- \$200,000 or more

How many people does this income support?

Have you been a member of the Armed Services/Military?

- Yes
- No

If yes, what is your current status?

- Active
- Retired
- Disabled or Injured
- Inactive

What is your employment status?

Self-employed

- Working more than one job
- Employed full-time (one job)
- Employed part-time
- Homemaker
- Retired
- Disabled
- Unemployed for 1 year or less
- Unemployed for more than 1 year

How many people in your household are working?

What county do you currently work in?

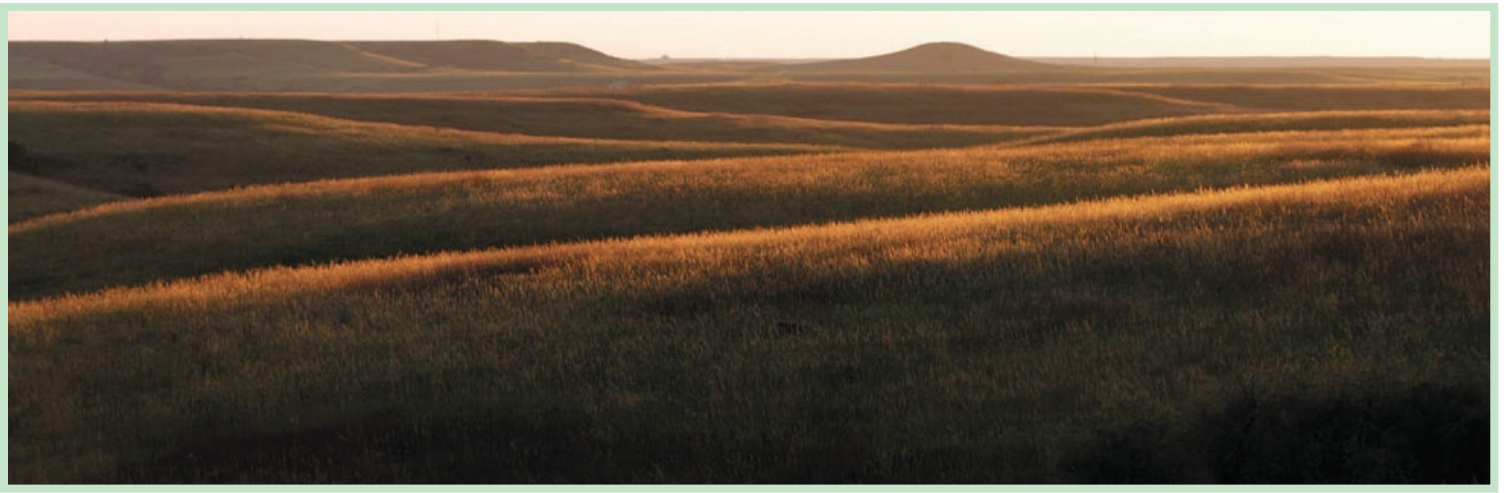
- Riley
- Pottawatomie
- Other

Are you a student taking courses for credit?

- Yes
- No

If yes:

- Part-time
- Full-time



Which of the following best describes the school you are attending?

- Four-year college or university
- Two-year community college
- Vocational, technical, or trade school
- Other

Do you participate in a religious/faith community?

- Yes
- No

Do you have access to the Internet at your home or residence?

- Yes
- No

Which of the best describes how you access the Internet? Check all that apply.

- Home Computer
- Work Computer
- Public Computer
- Mobile (cell phone, tablet, etc.)
- I don't access the Internet

How do you normally get your news about community events? Check all that apply.

- Newspaper
- Community flyers
- Social media (Facebook, Twitter, etc.)
- Newsletters
- Email/RSS
- Friends/Family
- Internet
- Radio
- TV/local cable

OTHER COMMENTS

Please share any additional comments about the community here:

Thank you for your participation.

Appendix B: Additional Survey Comments

ADDITIONAL COMMENTS

Table 139. Additional comments about the community.

Answer	Frequency	Answer	Frequency
Positive attitude towards the community	38	Responsible parenting	2
Affordable housing	13	Youth leadership/mentoring opportunities	2
Increase housing code enforcement/more home/rental maintenance	6	Improve traffic flow	2
More activities/entertainment/restaurant options	6	Affordable medical services	1
More law enforcement/crime prevention	6	Building revitalization	1
Cost of living is too high	5	Concerns that the community decisions are made by the wealthy	1
Enhance public transportation	4	Coordinating local and county government	1
Higher wages	4	Decrease code enforcement	1
Less fast food restaurants	4	Decrease teen pregnancy	1
Another grocery store	3	Difficult to connect to others in the community	1
Diversity education/more inclusive community	3	Events for special needs children	1
Improve school curriculum	3	Home care services	1
Increase bike lanes/pedestrian walkways	3	Improve school lunches	1
Increase low income services	3	Increase housing options	1
Lower property taxes	3	Increase job training	1
More job opportunities	3	Individual responsibility	1
More youth activities	3	Maternal care for the uninsured	1
Road maintenance	3	Montessori preschool	1
A common vision for the community	2	More civic engagement	1
Breastfeeding locations/support	2	More consistency across schools	1
Community growth plan	2	More fresh health food	1
Community recreation center	2	More outdoor recreation	1
Enhance mental health service	2	More retail stores	1
Enjoy the community events	2	More trailer parks	1
Increase community knowledge of available services/events	2	Pave dirt roads	1
Individualize instruction in the schools	2	Public school in Pottawatomie County	1
Indoor swimming pool	2	Summer care/camp	1
Substance abuse prevention/treatment	2	Too many military perks	1
More sport facilities	2	Enjoy the sports and music programs in the school	1
Repair pool/bigger pool	2	Increase hands free driving education	1
Repair sidewalks	2	More senior living options	1
		Difficulty with the survey	1

Appendix C: Community Resources

With the wealth of data obtained from the Comprehensive Community Needs Assessment as well as other local assessments, the community will embark on the second stage of addressing and improving the community by engaging in community dialogues and discussions. These discussions may be community-wide or agency specific, but in either case the goal will be to identify solutions to challenges in order to improve the quality of life for all Pottawatomie County residents. The following assets and resources are found within Pottawatomie County or serve Pottawatomie County and are linked to the major topical sections covered in the Comprehensive Community Needs Assessment.

Physical Activity

- City of Wamego Recreation Commission (<http://www.wamego.org/departments-and-staff/recreation>)
- Private Fitness Clubs and Gymnasiums
- Wam-Sag-Man Trail (<http://www.wam-sag-man.org>)

Nutrition

- Community Healthy Ministry Pantry (<http://www.wamegochm.org>)
- Harvesters Community Food Network for Pottawatomie County (<http://www.pottcounty.org/HealthDept/2013HarvesterLocations.pdf>)
- Pottawatomie County K-State Research & Extension (<http://www.pottawatomie.ksu.edu/p.aspx>)
- United Methodist Church Food Pantry
- Wamego Farmers Market

Mental Health & Substance Abuse

- Central Kansas Foundation (<http://www.c-k-f.org/>)
- Community Health Ministry Mental Health Services
- The Crisis Center (<http://www.thecrisiscenterinc.org/>)
- Onaga Community HealthCare System (<http://www.chcsks.org>)
- Pawnee Mental Health (<http://www.pawnee.org/wordpress/>)
- Three Rivers (<http://www.threeriversinc.org/>)
- Wamego Health Center (<https://www.viachristi.org/location/wamego-health-center>)

Access to Healthcare

- Community Health Ministry (<http://www.wamegochm.org>)
- Onaga Community HealthCare System (<http://www.chcsks.org>)
- Pottawatomie County Health Department

(<http://www.pottcounty.org/HealthDept/HealthServ.html>)

- Saint Mary's Community HealthCare System (<http://www.chcsks.org>)
- Wamego Health Center (<https://www.viachristi.org/location/wamego-health-center>)

General Community Assets

- 7 Township and Westmoreland Volunteer Fire Department
- Belvue Fire Department
- Blue Township Fire Rescue
- City of Onaga Fire Department
- Flint Hills Human Rights Project (<http://www.fhhrp.com/>)
- Kansas Legal Services (<http://www.kansaslegalservices.org>)
- Kansas Rural Communities Foundation (<http://www.thekrcf.org/>)
- Konza United Way (<http://www.konzaunitedway.org>)
- League of Women Voters of Manhattan/Riley County (<http://lwv.manhattanks.org>)
- Louisville Township Fire Department
- Manhattan Alliance for Peace and Justice (<http://www.mapj.org/>)
- Pottawatomie County Fire District 6
- Pottawatomie County Fire District 10
- Pottawatomie County RFD 2
- Pottawatomie County Sheriff's Department (<http://www.pottcounty.org/Sheriff/2010/SheriffServ.html>)
- Saint Mary's Fire Department
- Wamego Community Foundation (<http://www.thewcf.org/>)
- Wamego Fire Department (<http://home.wamego.net/firehouse>)
- Wamego Public Library (<http://wamego.mykansaslibrary.org>)

Children & Youth

- Big Brothers Big Sisters of Riley County – Serves Pottawatomie County (<http://riley.kansasbig.org/Default.aspx>)
- Boys and Girls Club of Manhattan (<http://www.bgclubmanhattan.com>)
- Northeast Kansas Community Action Program Head Start – Havensville and Wamego (<http://www.nekcap.org>)
- Parents As Teachers (<http://www.usd320.com/programs/Parents-as-Teachers/default.aspx>)
- Pottawatomie County 4-H (<http://www.pottawatomie.ksu.edu/p.aspx?tabid=19>)
- Pottawatomie County Child Care Licensing (<http://www.pottcounty.org/HealthDept/HealthDeptServices/ChildCareLicensing.html>)

Education

- Flint Hills Christian School (<http://flinthillschristianschool.org>)
- Highland Community College – Wamego Campus (<http://highlandcc.edu>)
- Manhattan Area Technical College (<http://www.manhattantech.edu/>)
- Manhattan Catholic Schools (<http://www.manhattancatholicschools.org/>)
- Kansas State University (www.k-state.edu)
- Olsburg Blue Valley Unified School District 384 (<http://www.usd384.org>)
- Onaga-Havensville-Wheaton Unified School District 322 (<http://www.usd322.org/>)
- Rock Creek Unified School District 323 (<http://www.rockcreekschools.org/>)
- Saint Mary's Academy & College (<http://www.smac.edu>)
- Saint Mary's – Kaw Valley Unified School District 321 (<http://www.kawvalley.k12.ks.us>)
- Wamego Unified School District 320 (<http://www.usd320.k12.ks.us/welcome/>)

Aging

- Grandview Suites Wamego
- North Central Flint Hills Area Agency on Aging (<http://www.ncfhaaa.com/>)
- Onaga Senior Center
- Saint Mary's Community HealthCare System (<http://www.chcsks.org>)
- Saint Mary's Senior Center
- Valley Vista Wamego Good Samaritan Society
- Vintage Park Wamego
- Wamego Senior Center
- Westy Community Care Home

Housing

- Housing and Credit Counseling, Inc. (<http://www.hcci-ks.org>)
- Manhattan Emergency Shelter, Inc. (<http://www.mesikansas.org>)
- Wamego Housing Authority (<http://www.wamego.org/departments-and-staff/wamego-housing-authority>)

Transportation

- Flint Hills Area Transportation Agency (<http://www.rileycountyks.gov/795/ATA-Bus>)
- Flint Hills Regional Council (<http://flinthillsregion.org/>)
- Pottawatomie County Public Transportation (<http://www.pottcounty.org/MiniBus/PTransServ.html>)

Economics

- Pottawatomie County Kansas Economic Development Corporation (<http://www.ecodevo.com>)
- Saint Mary's Chamber of Commerce (<http://www.saintmarys.com>)
- Wamego Chamber of Commerce (<http://www.wamegochamber.com>)

Sources of Data

The following online sources were used in the compilation of secondary data.

DATA SOURCES

BRFSS (Behavioral Risk Factor Surveillance System)

<http://www.kdheks.gov/brfss/BRFSS2013/index.html>

Centers for Medicare and Medicaid Services

<http://www.cms.gov/Research-Statistics-Data-and-Systems/>

[Statistics-Trends-and-Reports/Chronic-Conditions/CC_Main.html](http://www.cms.gov/Research-Statistics-Data-and-Systems/Statistics-Trends-and-Reports/Chronic-Conditions/CC_Main.html)

<http://www.cms.gov/Research-Statistics-Data-and-Systems/Statistics-Trends-and-Reports/MedicareEnrpts/Downloads/County2012.pdf>

Department for Children and Families

<http://www.dcf.ks.gov/Agency/Pages/CountyPackets/2013-County-Packets-Excel.aspx>

Flint Hills Regional Council

<http://flinthillsregion.org/297/wichita-state-university-releases-manhattan-housing-market-forecast>

**Kansas Association of Community Action Programs
Hunger Atlas**

<http://www.kacap.org/Resources/2012HungerAtlas/>

Kansas Bureau of Investigation

<http://www.kansas.gov/kbi/stats/stats.shtml>

http://www.kansas.gov/kbi/stats/docs/pdf/2012_DV_Rape.pdf

**Kansas Child and Family Well-being Indicators (KSU
and Dept. for Children and Families)**

<http://www.dcf.ks.gov/Newsroom/Documents/Childhood-Poverty-Task-Force/State%20of%20the%20Family%20Report%20%20Presentation%20by%20Dr%20Jared%20Anderson.pdf>

Kansas Communities That Care Survey

<http://kctcddata.org/domain.aspx?code=10081>

Kansas Department for Aging and Disability Services

http://www.kdads.ks.gov/Adult_Care_Homes/Facility_Reports/Facility_Report_Index.html

Kansas Department of Health and Environment

http://www.kdheks.gov/hci/as/2012/AS_2012.pdf

http://www.kdheks.gov/hci/adol_teen_preg/Adolescent_Teenage_Pregnancy_12.pdf

Kansas Health Matters

<http://www.kansashealthmatters.org/modules.php?op=modload&name=NS-Indicator&file=index&topic=0&topic1=County&topic2=Riley&group=category®name=Riley>

Kansas Kids Count

<http://kac.org/county-fact-sheets/>

Kids Count Data Center

<http://datacenter.kidscount.org/data#KS/5/0>

KS Cancer Registry

<http://www.kumc.edu/kcr/zsearch.aspx>

Robert Wood Johnson Foundation County**Health Rankings**

<http://www.countyhealthrankings.org/app/kansas/2014/rankings/riley/county/outcomes/overall/snapshot>

United States Department of Agriculture

http://www.ers.usda.gov/data-products/food-environment-atlas/go-to-the-atlas.aspx#.VGytAlfF_OX

US Bureau of Labor Statistics

<http://www.bls.gov/lau/laucntycur14.txt>

US Census Bureau American Community Survey

<http://factfinder2.census.gov/faces/nav/jsf/pages/searchresults.xhtml?refresh=t#none>

**US Census Bureau Small Area Income and
Poverty Estimates**

<http://www.census.gov/did/www/saipe/data/>

US Census Bureau State and County QuickFacts

<http://quickfacts.census.gov/qfd/states/20/20161.html>

OFFICE LOCATION

358 N. Main,
Wichita KS 67202

PHONE

316.978.3843

TOLL FREE IN KS

800.445.0116

FAX

316.978.3593

WEBSITE

www.ccsr.wichita.edu

CONNECT WITH US

 @wsuCCSR

 facebook.com/wsuccsr

About The Center for Community Support & Research

Wichita State University's Center for Community Support & Research (CCSR) is dedicated to improving the health of Kansans through research and evaluation, leadership development, organizational capacity building, community collaboration, and public health and behavioral health initiatives. CCSR's skilled staff works directly with community coalitions, nonprofits, government entities, health and human services organizations, and self-help groups to help them plan for and provide effective, sustainable services.

CCSR MISSION

WSU Center for Community Support & Research partners with communities and organizations to strengthen Kansas through education, leadership development, facilitation, and research.

CCSR VISION

That all Kansans use their talents and experiences to create thriving communities.

For more information about CCSR, call 316.978.3843 or visit our website at www.ccsr.wichita.edu

Want to know more about this report? Contact Dr. Tara Gregory at tara.gregory@wichita.edu



**WICHITA STATE
UNIVERSITY**

***CENTER FOR COMMUNITY SUPPORT
AND RESEARCH***



WICHITA STATE
UNIVERSITY

CENTER FOR COMMUNITY SUPPORT
AND RESEARCH